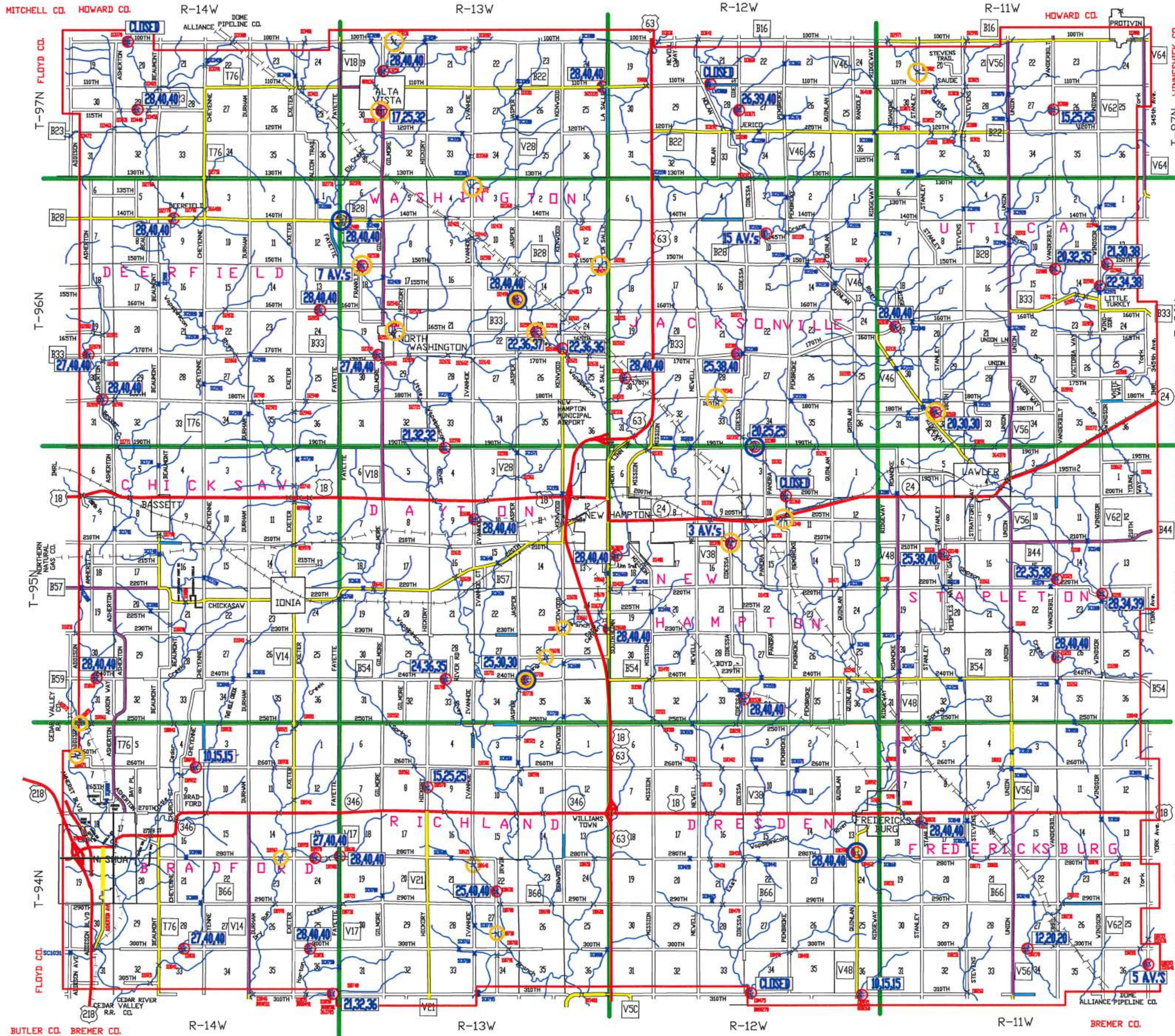


CHICKASAW COUNTY'S POSTED STRUCTURES

UPDATED 02/08/2022 RCL



POSTED @	BRIDGE NO.	LOCATION
CLOSED	BR0475, LWC0010	S34-94-12, S21-97-12
	BR1360, BR3370	SE3-95-12, N20-97-14
3	BR1390	T16-95-12
5	BR0285	E36-94-11
7	BR2530	N18-96-13
10,15,15	BR0495, BR0890	S36-94-12
12,20,20	BR0270	S27-94-11
15	SC2210	T10-96-12
15,25,25	BR0570, BR3010	E8-94-13, E27-97-11
17,25,32	BR3321	T30-97-13
20,25,25	BR1300	N3-95-12
20,30,30	BR2160	T32-96-11
20,32,35	BR2000	E15-96-11
21,30,38	BR1960	S12-96-11
21,32,32	BR1590	N4-95-13
21,32,36	B080501	S36-94-14
22,34,38	BR1981	W13-96-11
22,35,38	BR1121	E15-95-11
22,36,36	BR2600	V24-96-13
22,36,37	BR2580	T23-96-13
24,36,35	BR1700	N33-95-13
25,30,30	BR1720	S26-95-13
25,38,40	BR1140, BR2301	T17-95-11, S21-96-12
25,40,40	BR0631	T22-94-13
26,39,40	BR3171	V27-97-12
27,40,40	BR0970, BR1031	N24-94-14, N33-94-14
	BR2700, BR2870	N30-96-13, N30-96-14
28,34,39	BR1191	W24-95-11
28,40,40	BR19680	W19-95-12
	BR0131, BR0390	W17-94-11, T13-94-12
	BR0601	W18-94-13
	BR1051, BR1211	N36-94-14, W26-95-11
	BR1530	V34-95-12
	BR1600, BR1860	W10-95-13, N31-95-14
	BR2030, BR2311	T19-96-11, T30-96-12
	BR2400, BR2491	N7-96-13, V14-96-13
	BR2770, BR2851	N9-96-14, N24-96-14
	BR2891, BR363020	N31-96-14, T18-95-12
	BR3251, BR3440	W20-97-13, T29-97-14
	BR365335	N25-97-13

TOTAL 55 POSTED STRUCTURES

TOTAL BRIDGES 276 BRIDGES (INCLUDES CITY/CO. LINE)
 TOTAL STRUCTURAL CULVERTS 110 (INCLUDES CO. LINE)

○ ONE LANE BRIDGE: (20 TOTAL)

○ SAFE FOR ONE TRUCK ONLY (5 TOTAL)