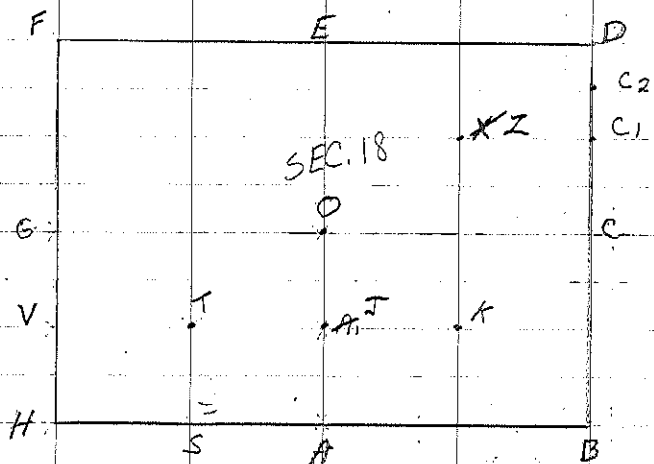


Sec 18-94-14 - LAND SURVEY MONUMENT RECORD

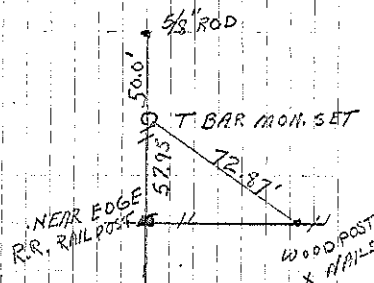
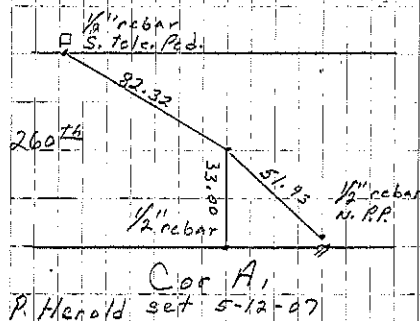
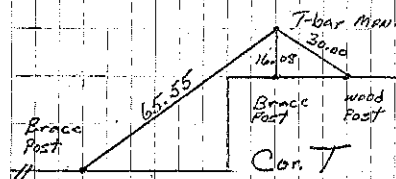
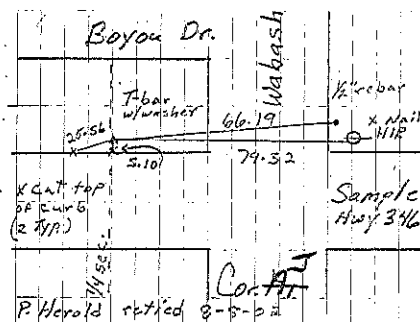
A1 J Found T-bar w/cap. 8-8-02. File 2002-1932

T set at prop. dist. E-W + N-S to 1874 survey plat

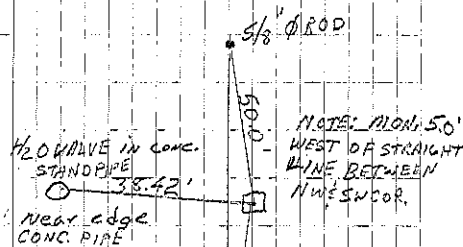


A1 Set 1/2" rebar w/alum cap 5-12-07. File 2007-0969
 Sec 2-94-13
 Richland

TIES SET BY WALLACE HOLLAND
 R.L.S.
 OCTOBER - 1975



COR. U
 SET AT MIDPOINT
 BETWEEN RE-ESTABLISHED
 N 1/4 COR. AND S W COR. OF
 SEC. 18

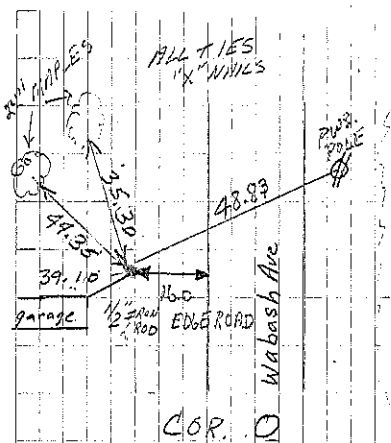


COR. G.

MEASURED DISTANCE FROM SW TO NW
 COR. 6 SEC. 18 = 5289.84'. FOUND IN
 20-095 CH. DIST. OF RECORD ON 1874
 PLAT IS EXPANDED FOR SW 1/4 SEC. AS WE
 HAVE 1326.2774 x 2 = 2652.554 FOR
 WEST SIDE SW 1/4.

(SEE NEXT PAGE)

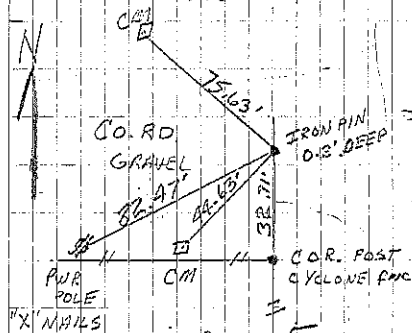
Found conc. mon. w/ 1 1/2" rebar. (Info from
Wallace & Holland '10-75) 3-6-98. BK 167 pg 75



COR. D

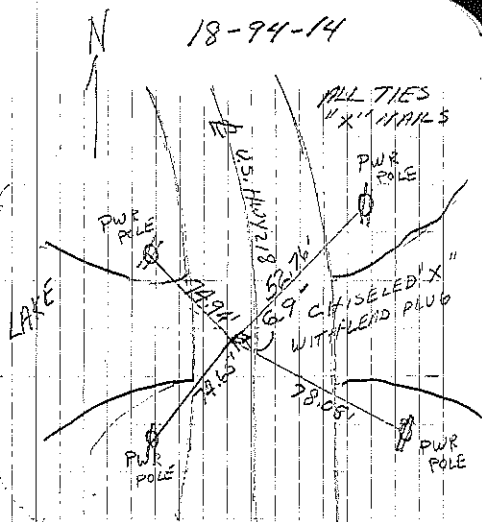
IRON ROD FOUND FITS USING PLUMB

RUNNING W/ L. AND CHECKS
REASONABLY WELL AGAUST DIST
OF 79.1 AS GIVEN FROM Q
OF U.S. NO 218

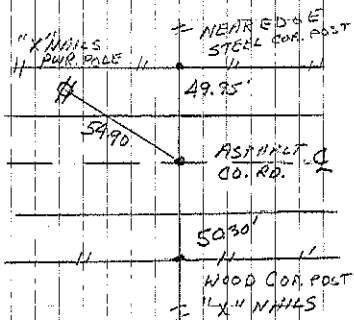


COR. F

David Buss FND 8-29-75



COR. A

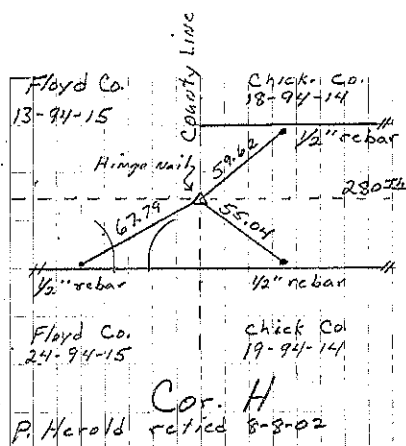


COR. S

RELOCATED ON LINE BETWEEN
N 1/4 COR AND NW 1/4 COR SEC 19
AT DIST SHOWN ON P.M.E.
HYCK ET ALERL SURVEY OF LOTS
ALONG SOUTH SIDE SE 1/4 SW 1/4
OF SECTION 18-94-14

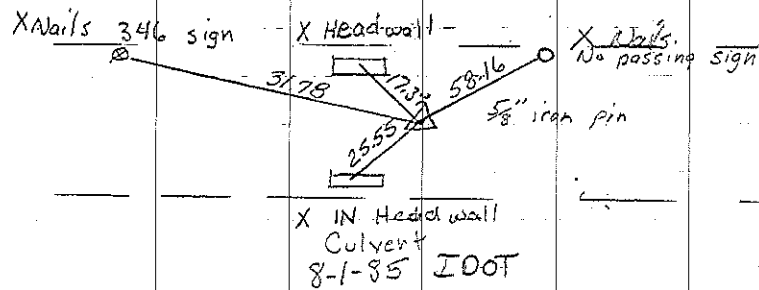
(SEE NEXT PAGE)

H Found hinge nail 8-8-02. File 2002-1930

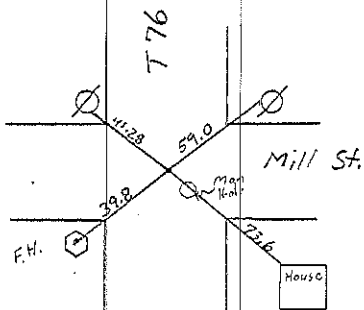


18-94-14

Section 17 Bradford

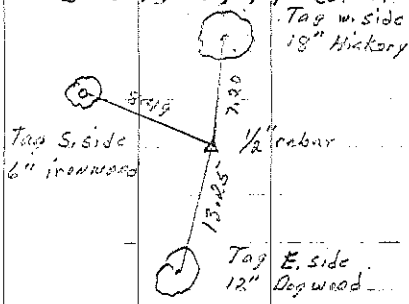


Sec 18-94-14 Cor. C



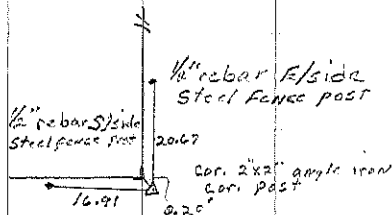
P.I. Sta 13+33.0
 4-14-92 R Anderson

Sec 17-94-14 Cor. A

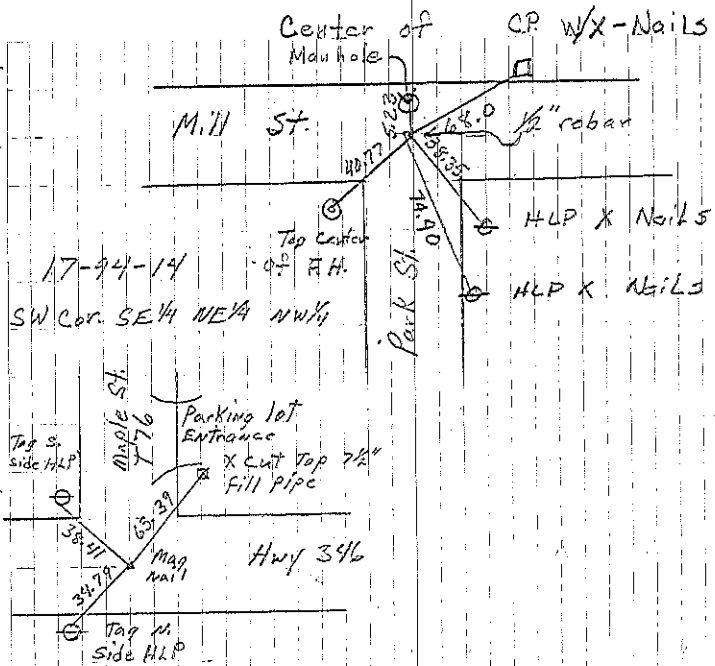


L. TeKippe Set 2-17-99
 File 1999-01904 or BK 170 pg 347

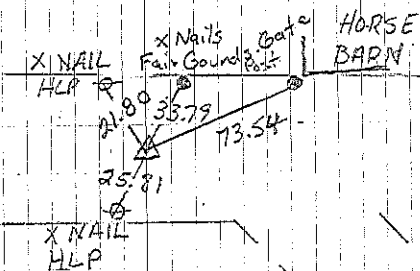
Sec 17-94-14 Cor X



L. TeKippe Set 2-17-99
 File 1999-01904 or BK 170 pg 347



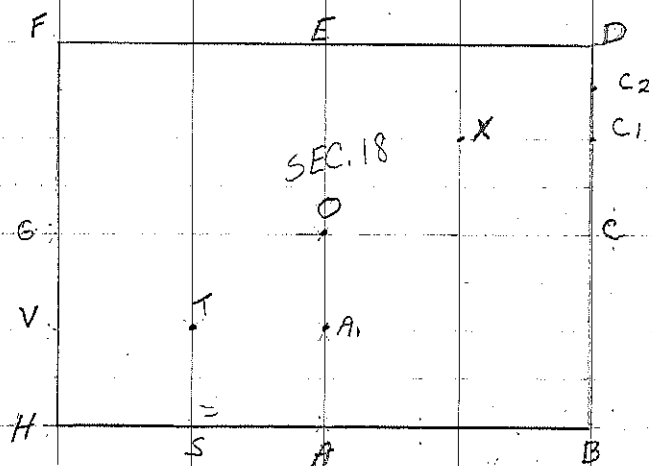
Cor. Y
 L. TeKippe Set 2-17-99



Center Sec. 17-94-14
 Pot. At Sta 50+32.6
 8-1-85 IDOT
 Cor. O

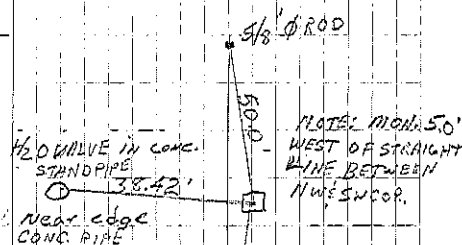
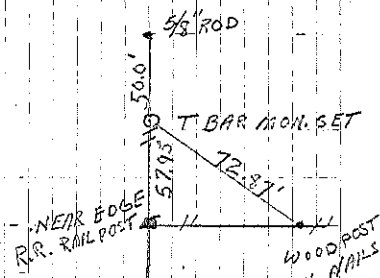
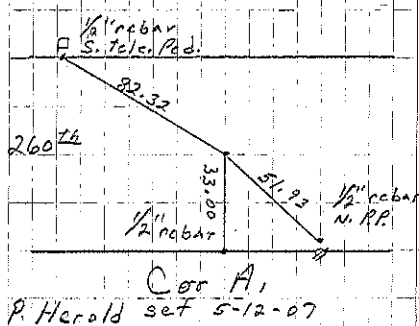
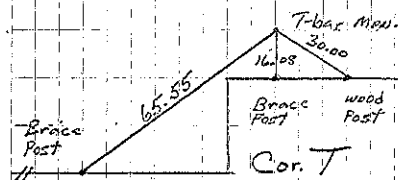
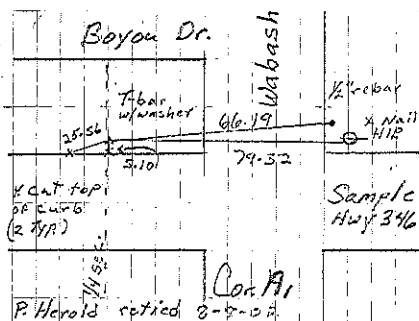
Sec 18-94-14 - LAND SURVEY MONUMENT RECORD

A1 Found T-bar w/cap 8-8-02. File 2002-1930
 T set at prop. dist. E-W & N-S to 1874 survey plat



A1 Set 1/2" rebar w/alum cap 5-12-07. File 2007-0969
 Sec 2-94-13
 Richland

TIES SET BY WALLACE & HOLLAND
 R.L.S.
 OCTOBER - 1975



(SEE NEXT PAGE)