

Bradford

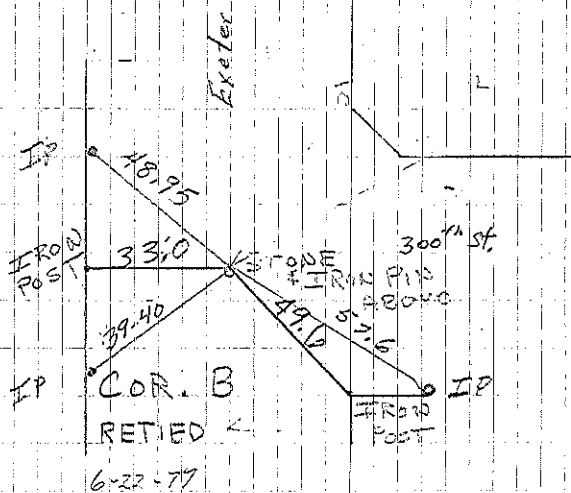
B Found STONE 33' FROM IRON POST.
FOUND STONE SET IRON PIN ABOVE
WEST 4-4-66 found 6-22-77

C SET STAKE 32' FROM W. COR. POST
Retied 8-22-97 Book 165-64

B Found iron pin 3-4-04. File 2004-0508

A Set 1/2" rebar w/2' alum. cap 9-11-06 File 2006-1900

Sec 26



L. Erdman found 3-4-04

