

Bradford

B¹ Found STONE

COR. C Found PIECE OF HUB & STONE/STONE 8"
BELOW ROAD BED 5-13-55

COR. B Found STAKE & STONE SET IRON PIN
OVER HIGH POINT OF STONE 5-13-55
Found PIN & RETIED 4-5-63

Found IP 6" below surface. Retied 6-3-83 JFM

COR. A Found STONE WITH PIN ALONG THE

EAST SIDE, RAISED 5-1-59
Found IP 6" below surface and retied 6-3-83 JFM

Dug large Hole & Found IP 2'

Below SURFACE. RAISED 5-6"

Below SURFACE & RETIED 4-7-61

Found IP & Retied 6-3-83 JFM

4007

4014

4005

4036

4007

4011

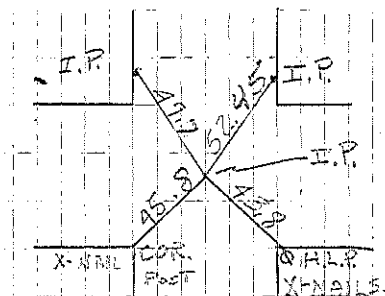
4038

4031

4034

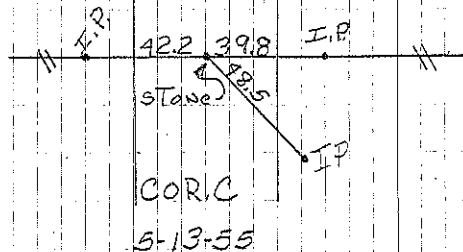
4027

4021



COR. B
RETIED 4-5-63

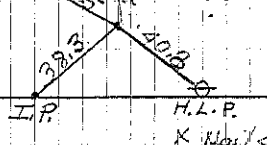
Retied 6-3-83 JFM



Sec 28

I.P. Top conc. Post side

42.55 ← 33.55



5-1-59
RETIED 4-7-61

COR. A
Retied 6-3-83 JFM