

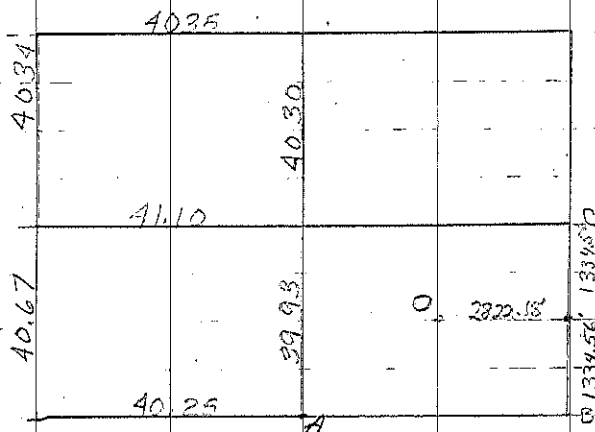
Broadford

B SET PIN IN LINE WITH FENCES
7-26-56 Found I.P. 15" Below
Surface & retied 7-23-63

C. SET PIN MIDWAY BETWEEN FENCES
7-26-56. RAISED 5" BELOW. 50 RE IT.
4-3-59

COR. C Found I.P. 2" below surface, raised
& retied 2-25-63.
retied 7-2-64

Cor. B' Set nail in mat. split between Cor. B+C
5-10-01 (midway between B+C)



Cor A Set 5/8" rebar w/cap 2-7-06. File 2006-0302

