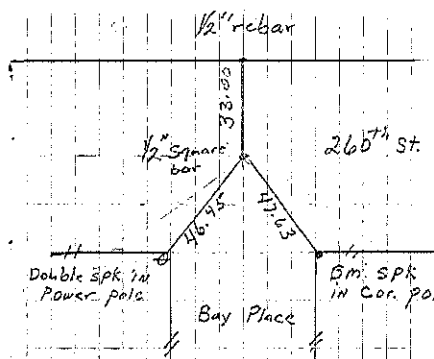


- Bradford
Stone
- A IRON PIN 4-25-52 S. Steinfadt setied 1-4-00
Found $\frac{1}{2}$ " square bar 4-14-06. File 2006-0846
- B IRON PIN 5-27-54. Found T-bar 0.3' deep 4-14-06
File 2006-0845
- C IRON PIN Set IRON PIN 5-27-54

Sec 5

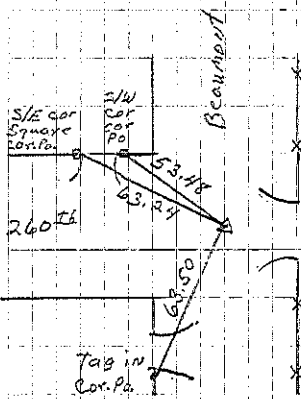


STEEL
COR. PO

37' 10" IR

IRON
PIN

COR. C



COR. B

S. Steinfadt setied 4-14-06