

Sec 14-95-14

COR. B HUB  
Iron PIN 1927

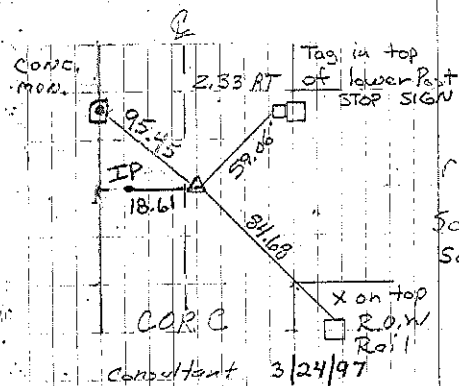
COR. Was NOT Found  
Set Stake

COR. C  
Rock  
Iron PIN 1937

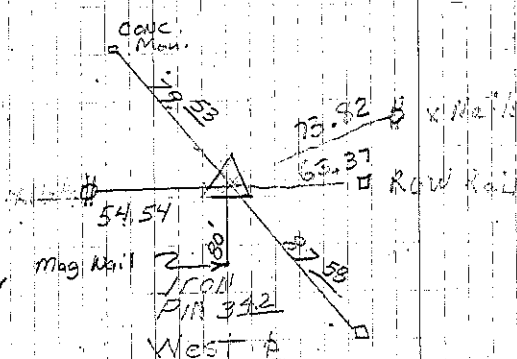
COR. Was NOT Found  
Set Stake & IP

Consultant 11/26/96

See more details after Sec 36 Chickasaw



COR. C  
Consultant 3/24/97

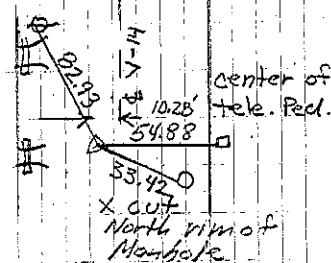


COR. B  
From I.H.C. 6-3-60  
Set PK 6-11-91  
Consultant 11/26/96

Chickasaw

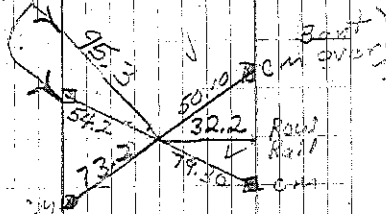
Set PK 6-11-91 JHAM  
Set PK 9-98 JF

Tagged East side HCP



COR. B  
Consultant 3/24/97

Row. Rails



POT STA 292+97.5  
Set PK 6-11-91

Sec 14-95-14

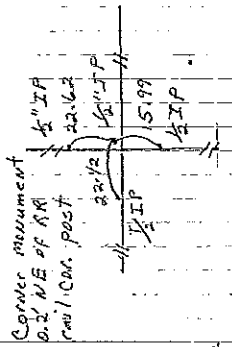
COR A Set  $\frac{1}{2}$ " rebar w/  $\frac{1}{2}$ " aluminum cap LS 7060  
by doubling distance from the center of this  
section to end across the SW cor. NW  $\frac{1}{2}$ -NE  $\frac{1}{2}$

COR A, Set  $\frac{1}{2}$ " rebar w/  $\frac{1}{2}$ " aluminum cap

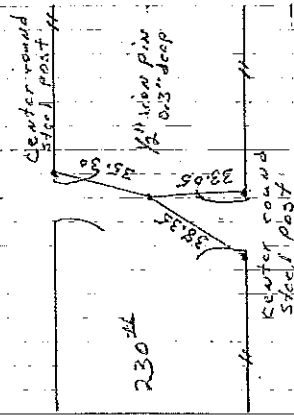
COR O Found  $\frac{1}{2}$ " iron pin w/ yellow plastic cap 11492

Sec 23-95-14

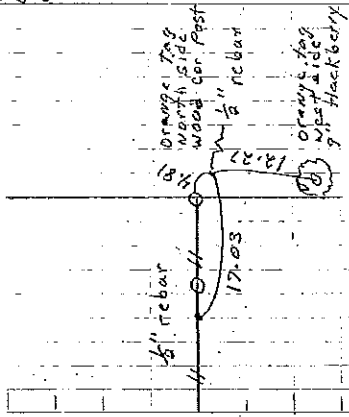
COR A Found  $\frac{1}{2}$ " pin 10-31-05. File 2005-2409



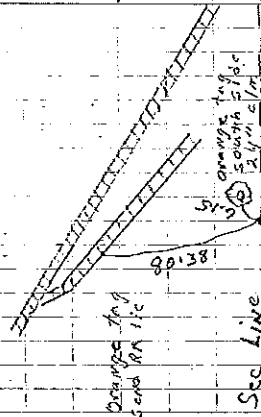
COR O  
LG Tekippe verified 7-00



COR A Set 23-95-14  
K. Stark relied 10-31-05



LG Tekippe set  $\frac{1}{2}$ " rebar 7-00  
COR A



LG Tekippe set  $\frac{1}{2}$ " rebar 7-00  
COR A, 14-95-14