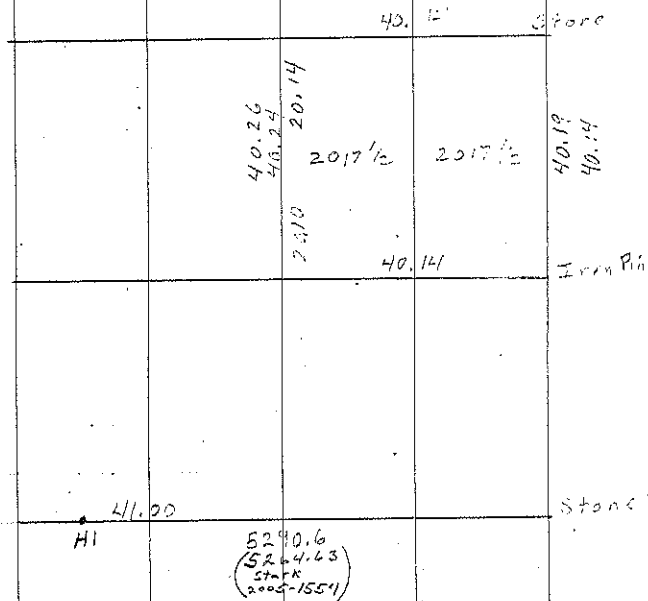


Sec. 16-95-19

COR. B STONE I.P. 1927 COULDN'T FIND COR.
SET STONE I.P.
Found iron pin 7-19-05 File 2005-1554

COR. C Iron PIN 1928 SET Iron pin

COR. H, Refer to sec 21-95-14 Sta 7+43.9



COR
Post

33 I.P.

COR. C

