

Sec. 2 - 95-14

COR. A Plug I.S.H.C. Found spike + washer 9-21-06

File 2006-1980

COR. B IRON PIN I.S.H.C. Found monument

25.18 N. of E. in gravel Rd.

Found 3" alum. disk 2-18-03 File 2003-2276

COR. C IRON PIN I.S.H.C. Found Stone Set

Iron PIN 4-25-08

DANA DUNCAN

KRUBER

John Murray

Found iron Pin 6-1-81 Scott Hamilton

Found 1/2" rebar w/ cap 7-18-03 File 2003-2276

COR. B' Cut X's in bridge 7-19-03 File 2003-2277

3284.2

3253.8

2669

3244.6

2669.7

2610.3
2677.6

C

1/2" rebar

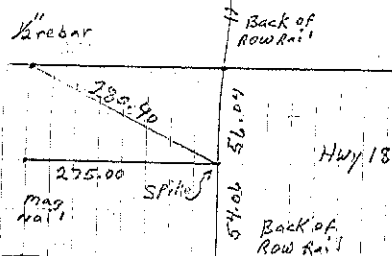
B'

B

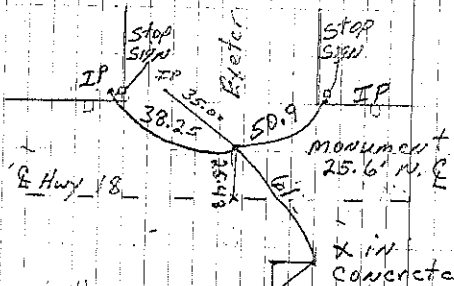
A SPIKE

1323.55
1323.56

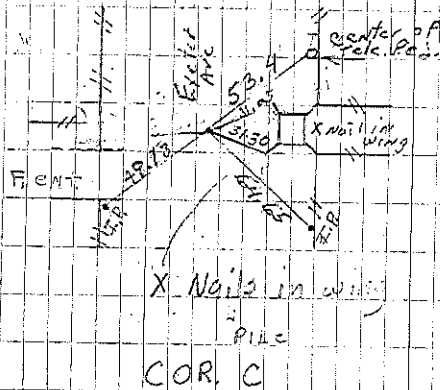
3" Alum. disk



Cor A
M. Shimok ret'd 9-21-06

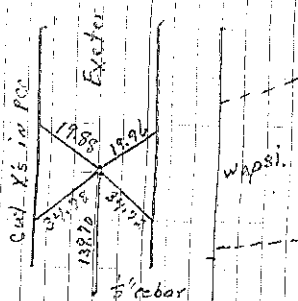


Cor B
Ret'd 6-01 J. F. Mt.
P. Harold Ret'd 7-18-03



P. Harold Ret'd 7-18-03

Chickasaw



Cor B'

P. Harold set 7-18-03