

Sec. 22-95-14

COR. A Stone
Iron Pin 1728

Found Stone
Placed IP

COR. B Stone
Iron Pin 1928
Found up whole intersection
with Ties. Found only set
Found Iron Pin & set tied

Found Stone
Iron Pin

Found Stone
Iron Pin
Found Stone
Iron Pin

COR. C Iron Pin 1927
Set SAND Stone & Iron Pin

Found Stone
Iron Pin

COR. CI Stone
Iron Pin 1927
Set Gas Pipe above

Found Stone
Iron Pin (Found same)

COR. EI Cement Nail set by Ties 9-7-67
Set PK nail in new mat 7-27-05

Set PK nail in new mat 7-27-05

COR. Fz Concrete (PIPE) 231

North of E of Asph. 6-14-66.

Found pipe raised w IP 6-2-88

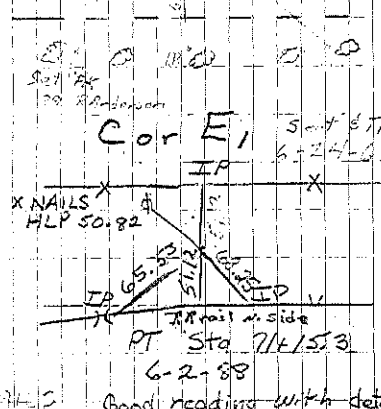
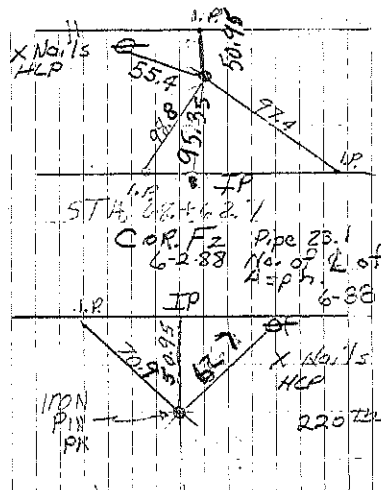
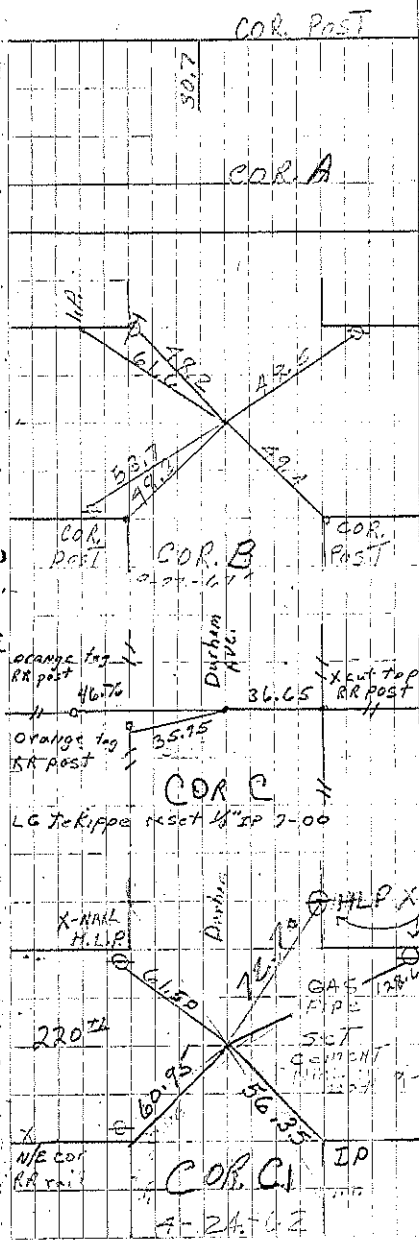
F E D

Fz EI CI

G O C

H A B

Chickadee



Set PK 6-89 Retired 4-10-67
Set PK 7-27-05
R Anderson R. Stark retired 10-31-05

Good reading with detector
@ Retired 6-2-88
Set PK 6-89
R Anderson