

Sec. 23-95-14

COR. A. Stone 6/45
 Found stone 5-18-55. Found pin 6-5-57
 (See After Sec 36 Chickasaw for more)

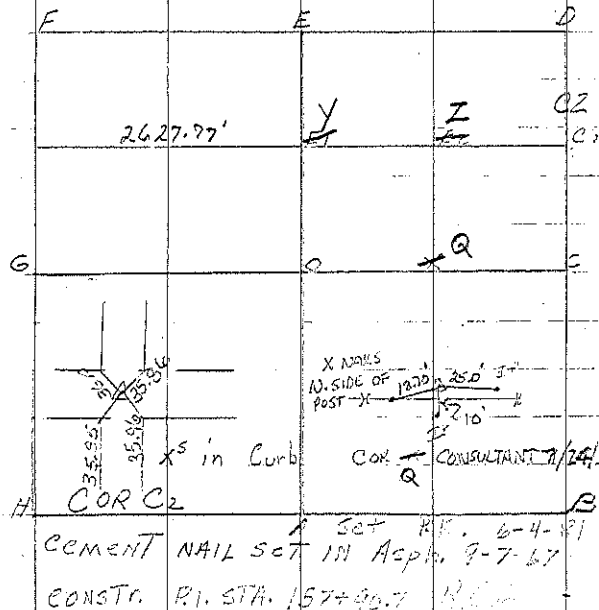
COR. B. Iron Pin 5-11-49. Fnd. Lt 5-18-55 Weber-Sisson
 Found PK nail beneath seal coat 4-11-97 BK 164 pg 431
 Set PK nail in new mat 9-98

COR. C Iron Pin 6-5-59 Raised O'Neill

COR. Y Set stone & iron pin 1927. Found stone & set
 pipe above 2-21-62. Set cement nail 7-7-67. Set PK
 nail 7-27-05. Found PK 10-31-05. File 2005-2409

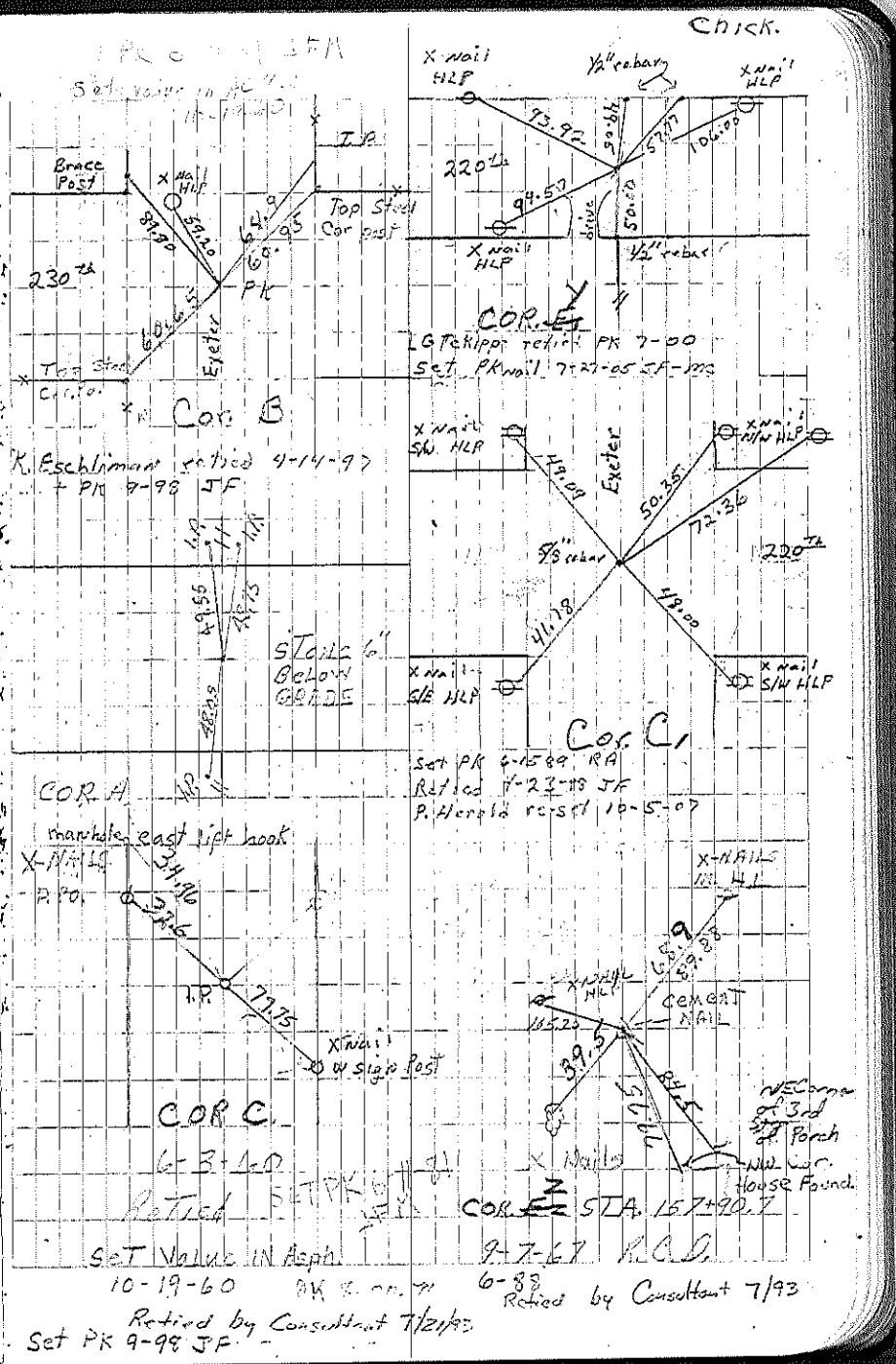
C1 set 5/8" rebar w/ alum cap 10-5-07. File 2007-1962

See After Sec 36 Chickasaw for more



COR. Z

COR. C2
 cement NAIL set IN ASPH. 9-7-67
 CONST. R.I. STA. 157+99.7
 Set PK. 6-4-81 J.F.
 Retired by Consultant 7/2/93



Set Value in ASPH 10-19-60 PK 8.00.71
 Retired by Consultant 7/2/93
 Set PK 9-98 J.F.
 Retired by Consultant 7/93

Sec 14-95-14

COR A Set $\frac{1}{2}$ " rebar w/ $\frac{1}{2}$ " aluminum cap LS 7060
by doubling distance from the center of the
section to end across the SW cor. NW $\frac{1}{4}$ -NE $\frac{1}{4}$

COR A, Set $\frac{1}{2}$ " rebar w/ $\frac{1}{2}$ " aluminum cap

COR O Found $\frac{1}{2}$ " iron pin w/ yellow plastic cap 11492

Sec 23-95-14

COR A Found $\frac{1}{2}$ " pin 10-31-05. File 2005-2409

