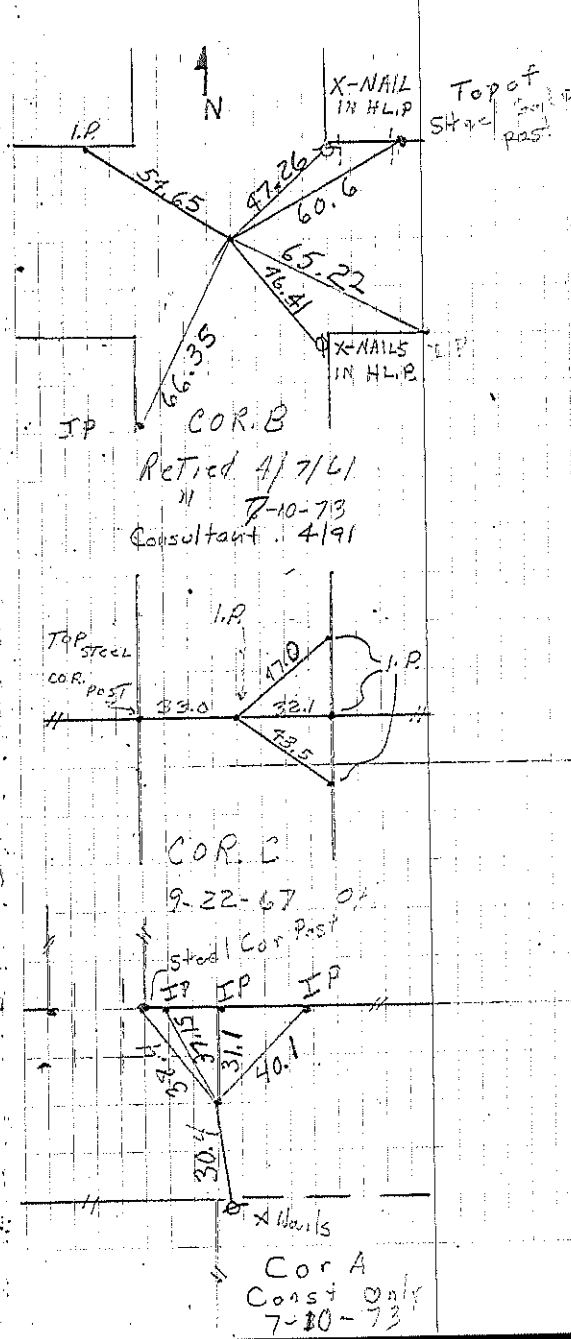
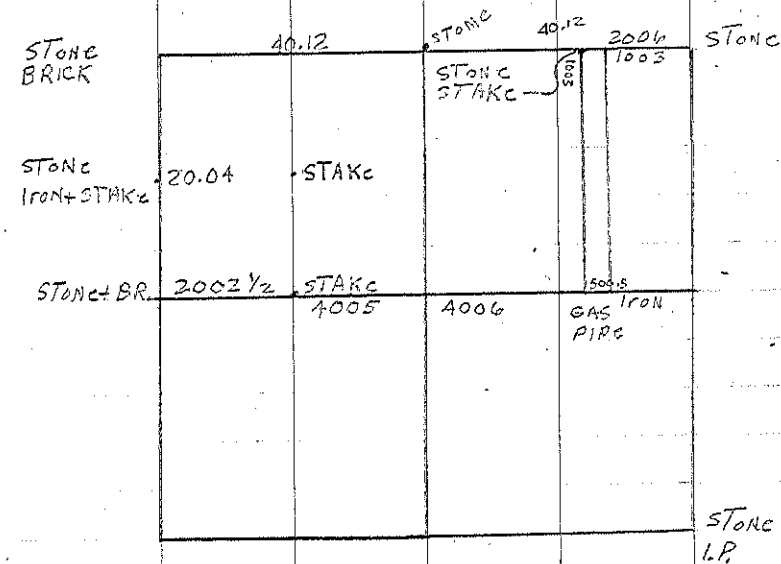


Sec. 27-95-14

COR B Stone
 Iron Pin 1928 Found Stone set 41'
 dug Large hole found PIN & RETICD
 4-7-61 Cleveland & Duneman
 STONE

COR C. Iron PIN 1928 Found Stone set I.P.
 Dug Large hole 3'5" X 5' X 5'
 could NOT Find I.P. Cleveland, Duneman
 4-10-61
 Split Fence 66' apart, so set
 Iron Pin For CONST, Purpose only
 For E Bridge North. 9-22-67
 DUNEMAN.

Cor A Split Box Culv. East + split fences @ 66'
 + set I.P. for const. East 7-10-73



Chick & son

COR B
 Retired 4/7/61
 " 7-10-73
 Consultant 4/91

COR C
 9-22-67

Cor A
 Const Only
 7-10-73