

Sec. 8-95-14

Cor B Stone 1927. Fnd stone & IP 1952. Raised & retied

Cor C Stone 1927. Fnd stone & set IP 1955.  
Set valve in Asph 10-20-60. Set PR nail  
in new mat 7-28-05

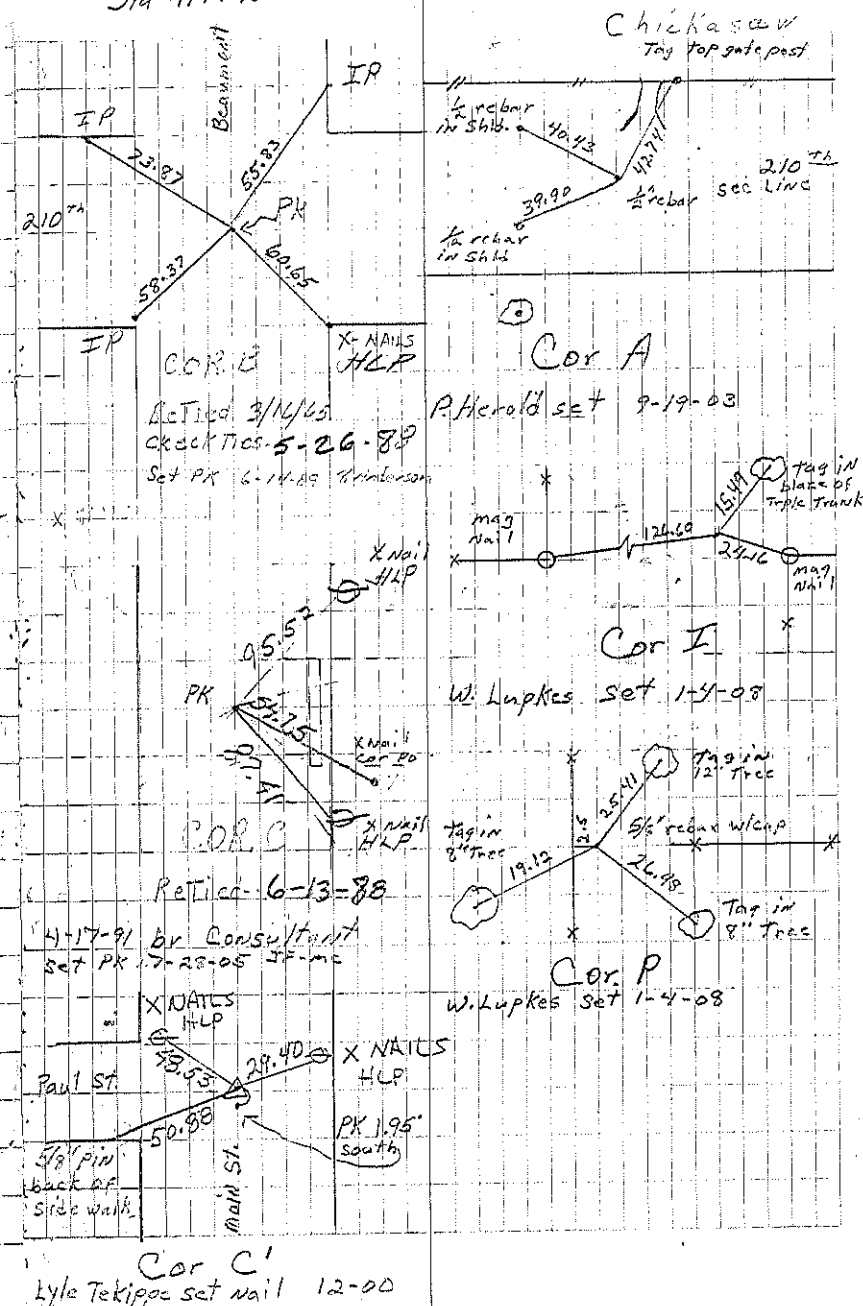
Cor A. Set 1/2" rebar w/cap 9-19-03 File 2003-2980

Cor C<sub>1</sub> SE cor. NE 1/4 - NE 1/4. Set mag nail w/washer  
12-2000

Cor I Set 5/8" rebar w/cap 1-4-08, File 2008-0049

Cor P Set 5/8" rebar w/cap 1-4-08, File 2008-0048

Sta 417+40.6



Cor C<sub>1</sub>  
Lyle Tekipoc set nail 12-00