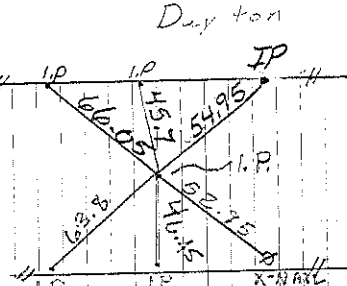
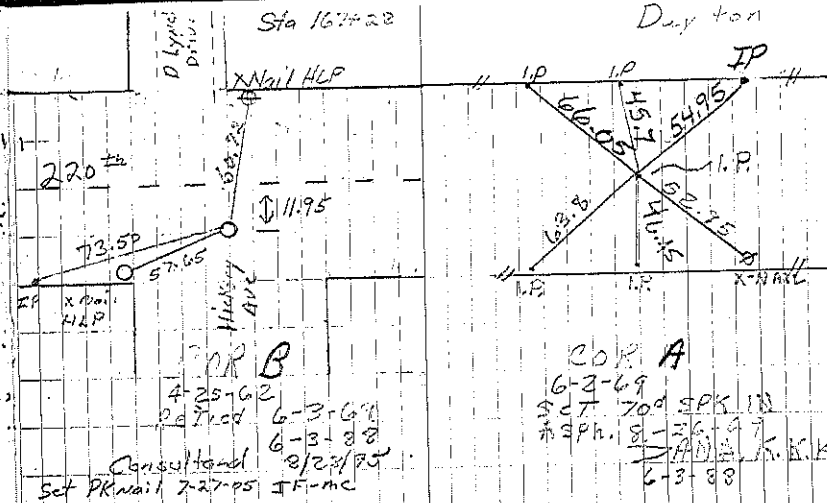


Sec. 17-95-13

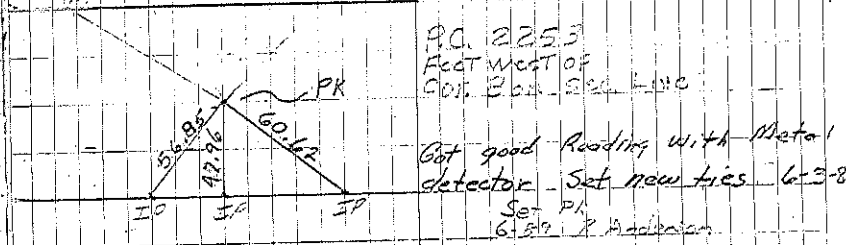
COR. A. Iron PIN MIDWAY BETWEEN FENCES ALSO  
SPLIT MILE 4-27-62 BANK  
PUNOMAN, Kruger.

COR. B. Found Iron PIN OVER STONE.  
Retried PIN WITH GAS PIPE, JANA, Kruger. HAN?  
Ties OK so drove I.E. & retied 11-17-62  
Set PK nail in new mat. 7-27-05

STONE	1327'	STONE	STONE	STONE
	10.93 ch	38.13 ch		991
39.93 ch		39.96 ch		STONE
		40.74		STONE
				STONE
STONE	20.85 ch	STONE	STONE	STONE
40.23 ch		40.00 ch		
				26.36'
				37.75 ch
	26.453'	26.453		STONE
				I.P.



COR A  
6-3-69  
Set 70d SPK 111  
SPH. 8-26-87  
K.K.K.  
6-3-88



Ref. to P.C.  
of S1303(4)  
TA 165+00.7  
1-3-69  
Set PK nail 8-2-05 JF-mc