

Sec. 20-95-13

COR. A Piece of Auto Top Found 8-1-34

Dug for in 1956 but could not find  
Set 5/8" rebar w/alum. cap as witness corner 35.90' west of

True cor. 11-2-07 File 2007-2146  
STONE Found STONE and CROCKERY 9-17-55

COR. B Crockery with Iron Mower Head. Stone to High.

To raise. Found 1" rebar 11-2-07, File 2007-2149  
Found STONE 3"

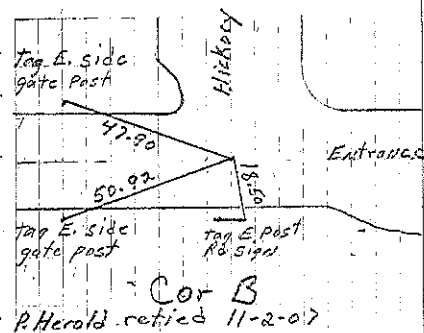
COR. C STONE 1986

Set pin 0.4' S. of stone 8-28-95

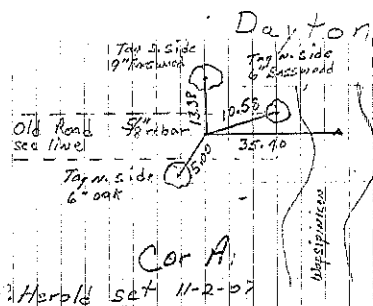
A1 Set 5/8" rebar w/alum. cap 11-2-07 File 2007-2147

Y Set 5/8" rebar w/alum cap 11-2-07 File 2007-2148

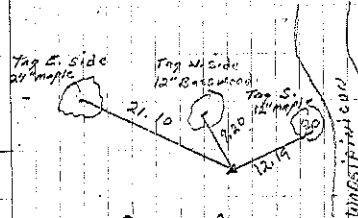
C1 Set 5/8" rebar w/alum cap 11-2-07 File 2007-2148



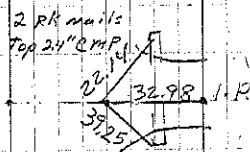
Cor B  
P. Herald retied 11-2-07



Cor A  
P. Herald set 11-2-07



Cor. A  
P. Herald set 11-2-07



COR C  
Consultant 8/28/95