

Sec. 28-95-13

COR H. Stone 1928

Set Iron PIN HALFWAY
Between Section COR.S.
8-17-72 Duneman

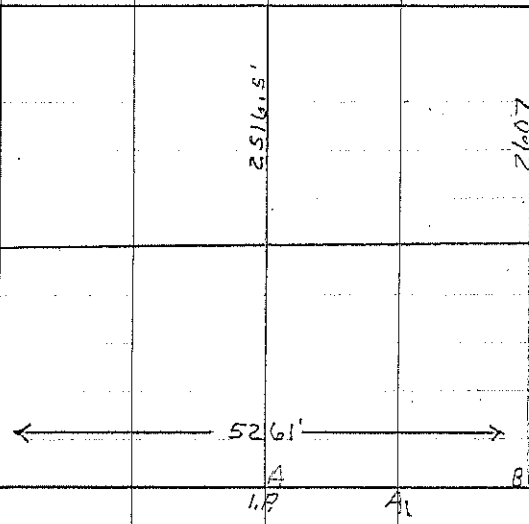
COR A Iron Pin 1928

Set I.P. HALFWAY
Between Fence

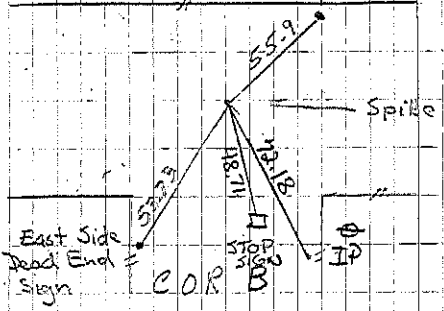
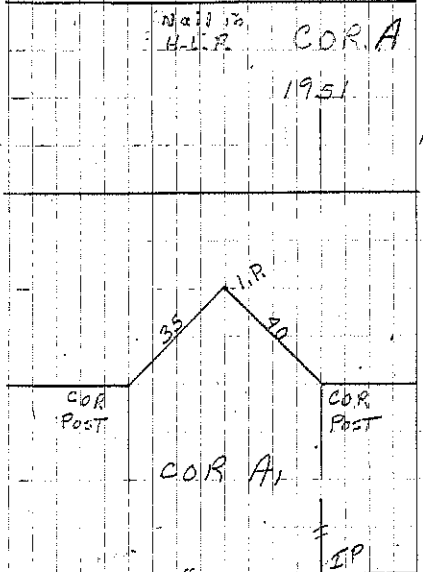
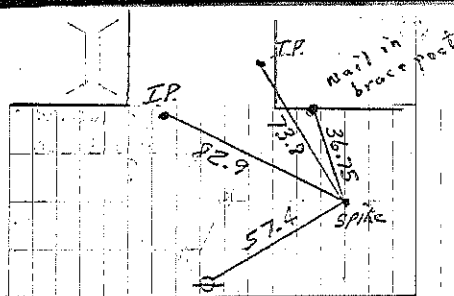
COR B Stone 1928

Set Iron PIN 8-17-72
by spl. H. fence Duneman

COR C Used Fence CORNER Fnd 1/2" rebar w/cap.
3-11-08. File 2008-0687

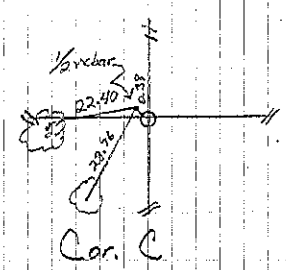


1/2" rebar



Dug for this in
Dec. 1956 Did
NOT FIND

Dayton



P. Herold reticd 2-11-08