

Sec. 33-95-13

COR A I.P. 9-15-86 SET I.P. For CONSTRUCTION

Find 5/8" rebar 1-4-08, File 2008-0016
2636 To 1/4 Cor N.

COR B I.P. SET I.P. 5124 To S.W. COR

Cor B I.P. Found new I.P., Plastic Stake & Lath checked distance to 1/4 Cor N. OK
12-14-80, set 3 I.P. on ROW Line

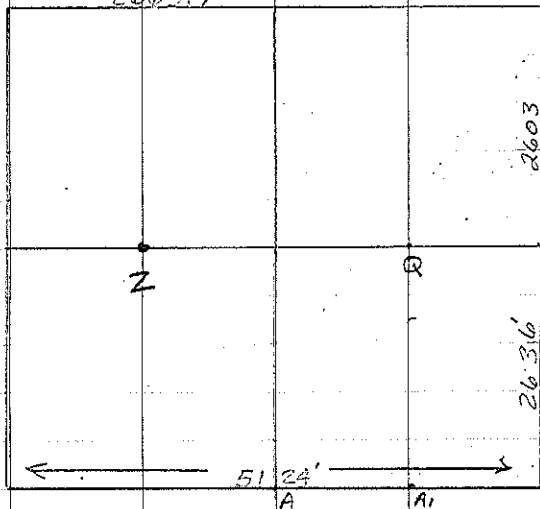
Cor Q Find 5/8" rebar 1-4-08, File 2008-0015

Cor C Set 1/2" rebar with 2" aluminum cap #7060 1/19/99

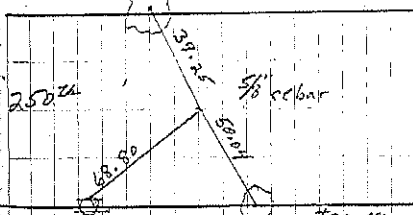
A1 Find 5/8" rebar 1-4-08, File 2008-0016

Cor Z Set 1/2" rebar with 2" aluminum cap #7060 1/19/99

2663.7

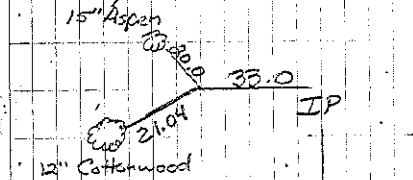


Tap in 12" Oak

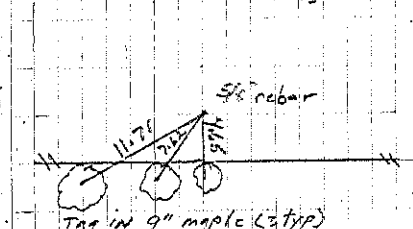


Tap in HLF COR A Tap in 15" Oak

G. Casady retired 1-4-08

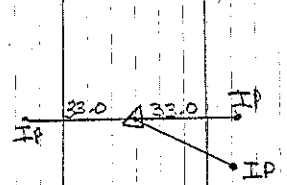


12" Cottonwood
COR B Consultant 1/19/99

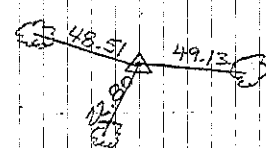


COR Q G. Casady retired 1-4-08

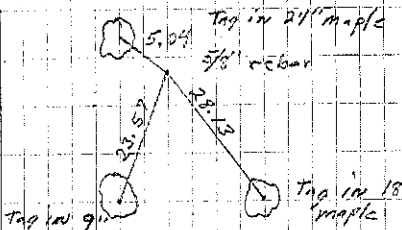
Dayton



COR C Consultant 1/19/99



Cor Z Consultant 1/19/91



Tap in 9" maple
COR A1 G. Casady retired 1-4-08