

Sec. 6-95-13

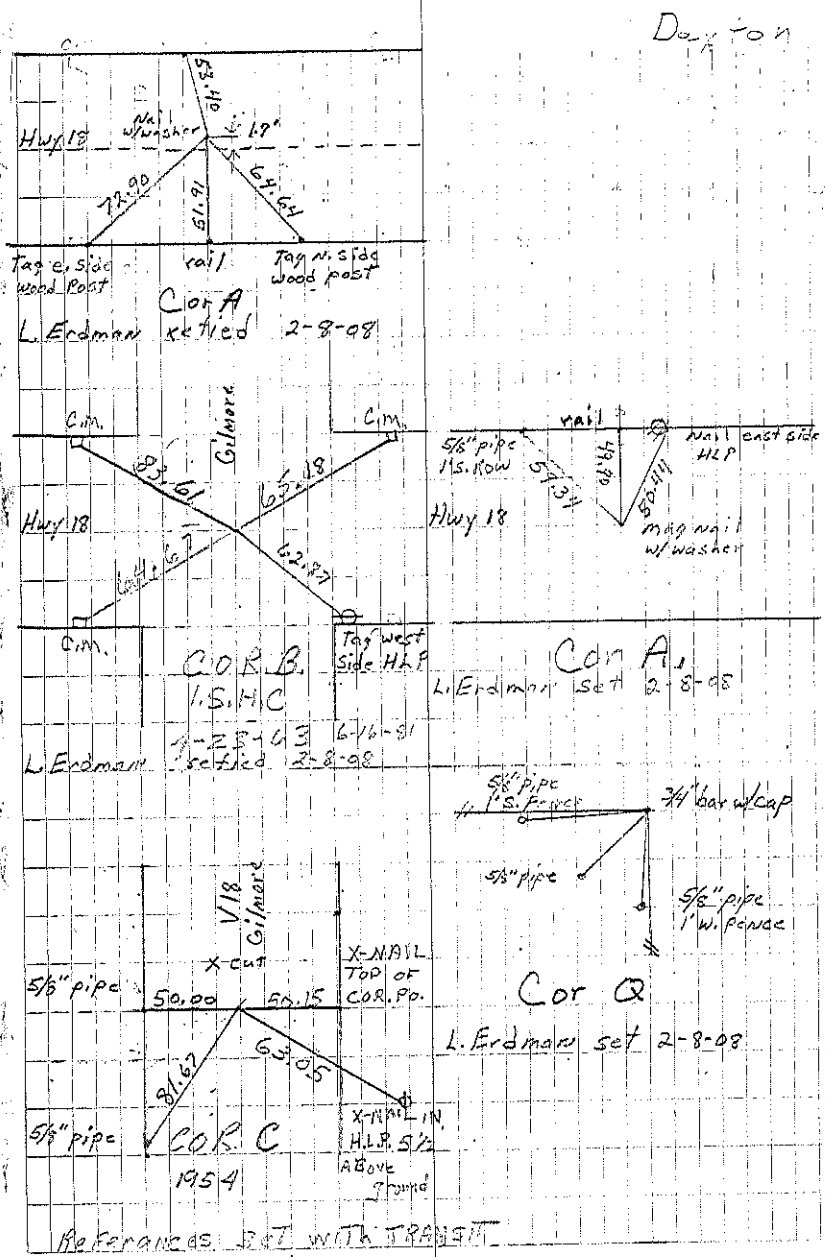
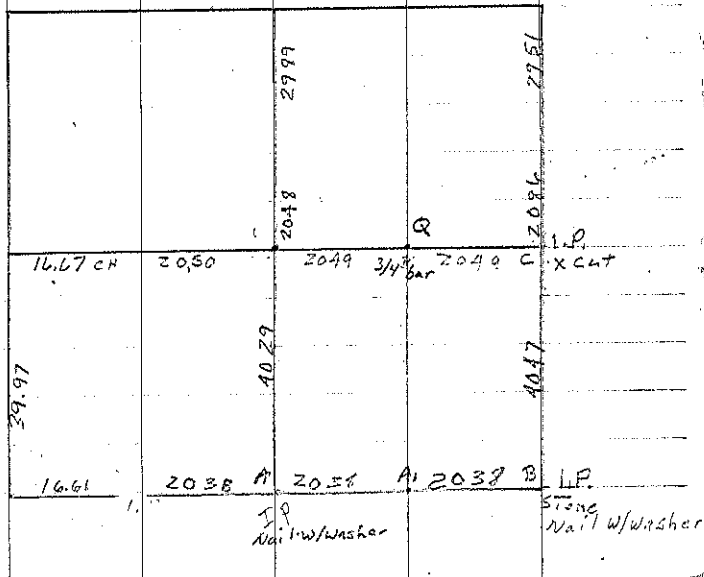
COR A I.P. I.S.H.C. Fnd nail w/1/2" washer 2-8-08  
File 2008-0252.

COR B Stone I.P. I.S.H.C. Retied with nail & washer 2-8-08  
File 2008-0248

COR C I.P. Retied in 1954. Fnd. "X" cut 2-8-08. File 2008-0251

A1 Set mag nail w/washer 2-8-08, File 2008-0247

Q Set 3/4" bar w/cap 2-8-08. File 2008-0247...



Drawing

REFERENCES SET WITH TRAMM  
Set Nail in mat 8-12-7/  
L. Erdman retied 2-8-08