

DEERFIELD South

Sec. 1

A IRON PIN 6-7-1929 MIDWAY BETWEEN  
FENCES

80 Rod Cor. 16.4" From N. Corner Post  
57.0" South Fence

O SET IRON PIN April 1953

A 1-96-14 Deerfield

Found 1"x2" STAKE AND IRON PIN 1/2 FT

Below SURFACE SET I.P. ABOVE & RETIED 10-26-60

Raised 3' & retied 7-16-63. Found nail 8-21-00

File 2000-1500

B Found Iron pin, Eye in Top 4" Below surface

Retied 10-26-60. Found PK 2-20-77. BK

163 pg 391

(306+52.6 1970 PROJ)  
POINT X STA 16+97 P.I. DETL = 7° 2' RT

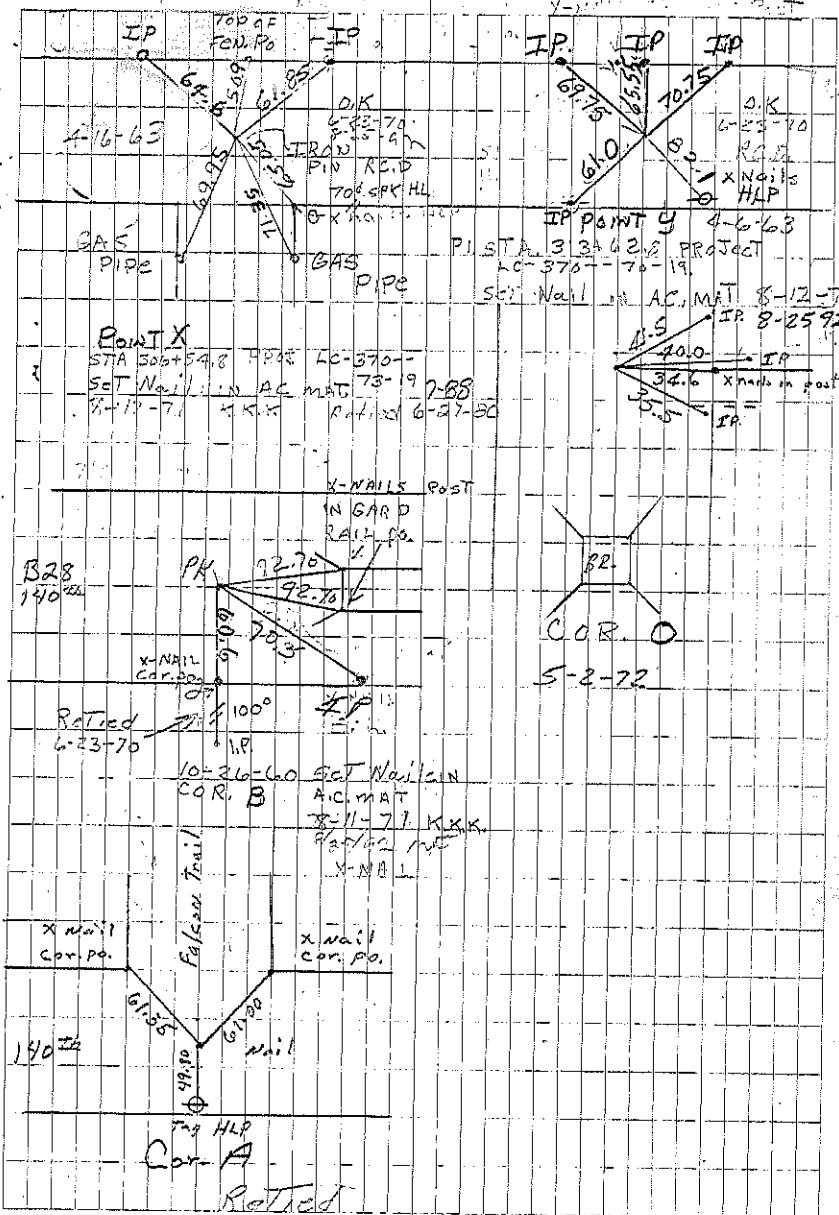
CONSTR. POINT SET 4-16-63

(313+62.8 1970 PROJ)  
POINT Y STA 24+05 P.I. DETL = 4° 46' LT

CONSTR. POINT SET 4-16-63

PANA

Sec. 1



Set Nail in AC MAT 2-12-71  
4-16-63 SET PK 6-12-81  
S. Busse retied 8-21-00

Retied 6-27-80