

DEERE FIELD SOUTH Sec. 22

C. Limestone 1925 T.W.P. grade Limestone  
 Consult. Reset 3/4" rebar w/ cap 5-20-05. File 2005-1123

B. IRON PIN 1928 Found Limestone  
 & Placed IRON PIN

Found I.P. That was placed on I.P.  
 That was bent over stone.

Removed both pins SET one directly  
 over high point of stone RETIED 8-3-56

Consult set 3/4" rebar w/ cap 5-20-05. File 2005-1124

A Tied in const. point SET by  
 CONSULTING Eng. 4-23-57

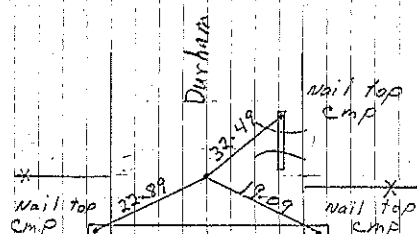
Consult. And. 1" iron pin 5-20-05. File 2005-1125

Boulder  
 4085  
 Limestone  
 4083

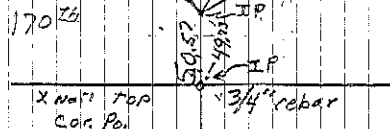
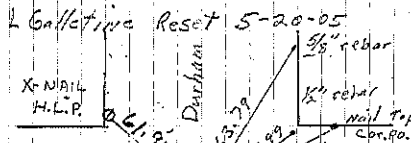
A stone  
 1" rebar

B stone  
 3/4 rebar

Sec. 22

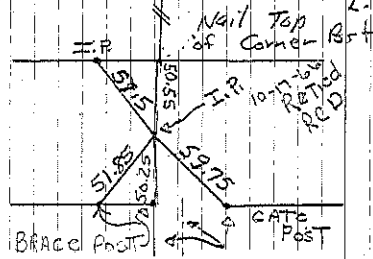


COR. C



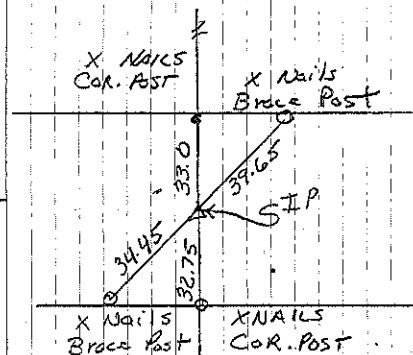
COR. B.

Retied 8-3-56 - Raised 4-8-58  
 Consult retied 4-21-92  
 L. Gallentine retied 5-20-05



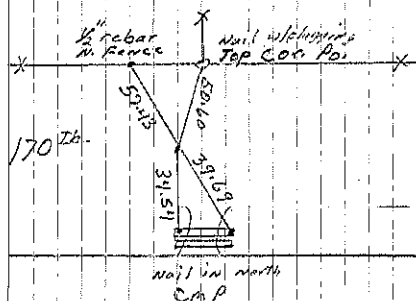
COR. A

CONST. ONLY 1957  
 RAISED 2-8-58



COR A

Tie from Consultant History



COR. A

L. Gallentine retied 5-20-05

RETIED BY CONSIL. 4/92