

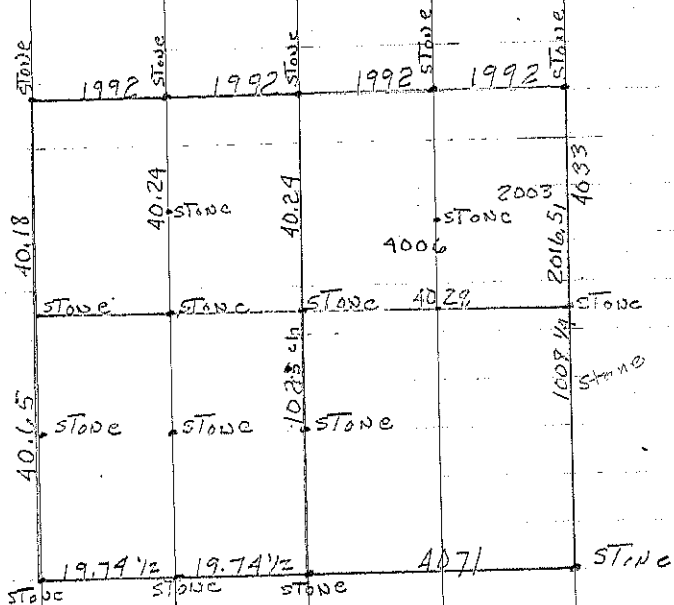
DEERFIELD SOUTH

Sec. 24

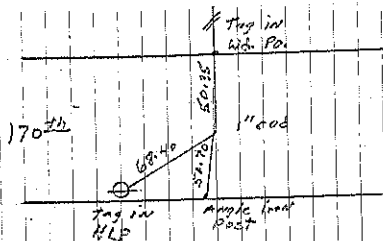
B. I.P. brick & stone 6-24-26 42.2 To outside corners. Found marked corners as described. Stone & brick 33' North of COR. Post. To South. Found 1/2" rebar 7-19-98. BK 163 pg 241

A. IRON PIN 8-13-29 Found IRON PIN Found stone & brick about 18" below surface. Placed I.P. OVER high POINT. Retied 8-3-56 Found 1" rod 7-19-98. BK 163 pg 241

B Found I.P. Retied 8-6-56



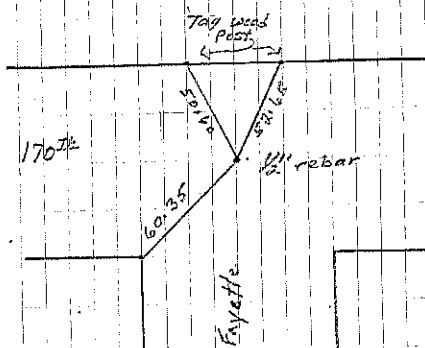
Sec 24



Cor. A

Raised 4-10-58

S. Busse retied 7-19-98



Cor. B

Raised 4-10-58

S. Busse retied 7-19-98