

DEERFIELD SOUTH

Sec. 26

B

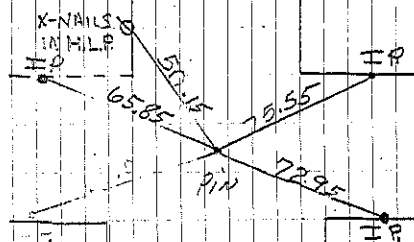
Stone & rod PIN 1927, Found PIN
And retied 4-29-68 DAIN.

C

IRON PIN 1927 CORNER Found

A

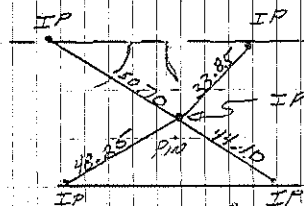
Found Stone 33' from N. Fence
Retied with iron pins. 6-12-54



COR. B

Found Pin & Retied 12-4-91 RA

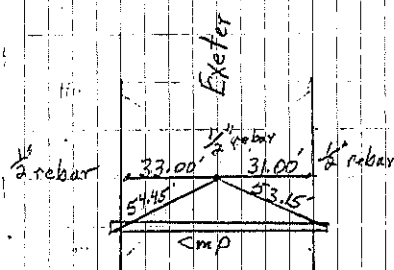
Retied 10-01 JP, MT, JF
Steve Busse retied 11-01



COR. A

Found Pin & Retied 4-24-91 RA

Steve Busse retied 11-01



COR. C

Steve Busse retied 11-01

2653.5

178° 53' 30"

2615.4

IP 2830.95

A

IP B

Sec. 26