

DEERFIELD North

Sec. 19.

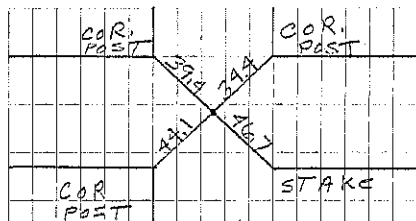
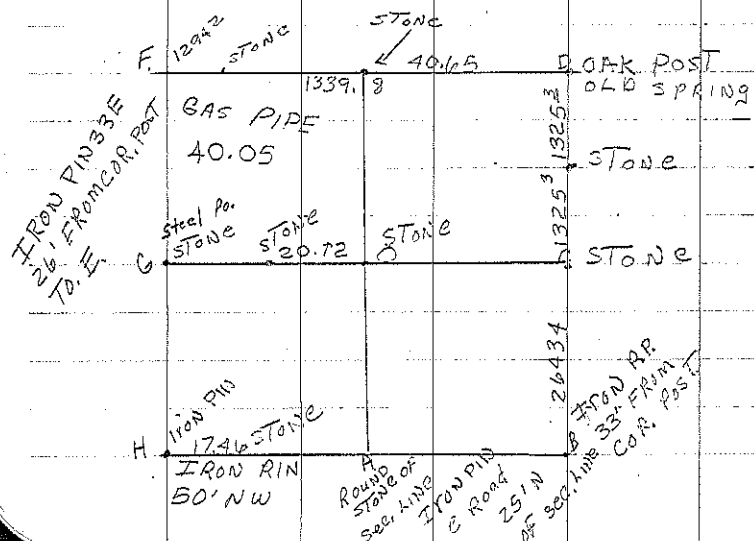
C Found Stone 31' From EAST COR. POST

A Found Stone 1-7-94 File 159-492

D SET CORNER 1325³ N. OF EIGHTY
COR. AND IN LINE WITH SAID COR.
7/4 COR. FOUND IRON PIN SET 3/4" X
8" BOLT ABOVE IT. 5-20-55, D.A.W.A.

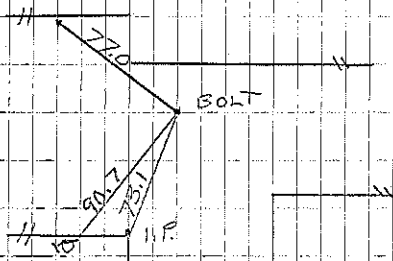
F DROVE 2" GAS PIPE 4' LONG
Where I Found A SMALL LIME-
STONE SET ON END

H Found IP 1-7-94 File 159-492



COR. F

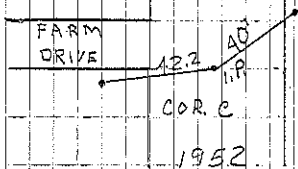
N.W. COR. SEC. 19-97-14



COR. D

5-20-55

Ret'd 7-1-63



COR. E

1952

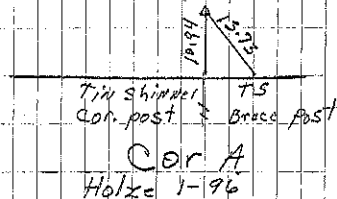
NORTH WASH. Sec. 19

COR. E

47.6 To NE COR. POST

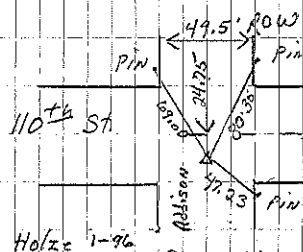
24.3 To NW COR. POST

110th ST. E



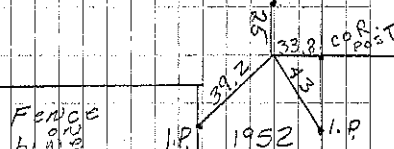
COR. A

Holze 1-96



COR. H

Edge



COR. B