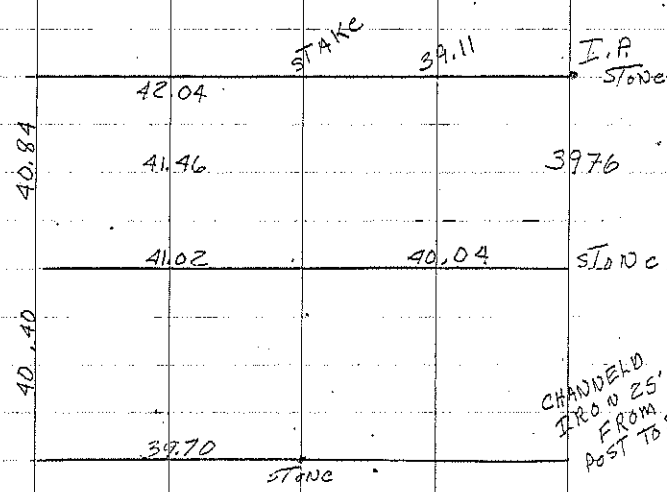


DEERFIELD North Sec. 26

A Found stone set IRON PIN ABOVE
MAY 3, 1954

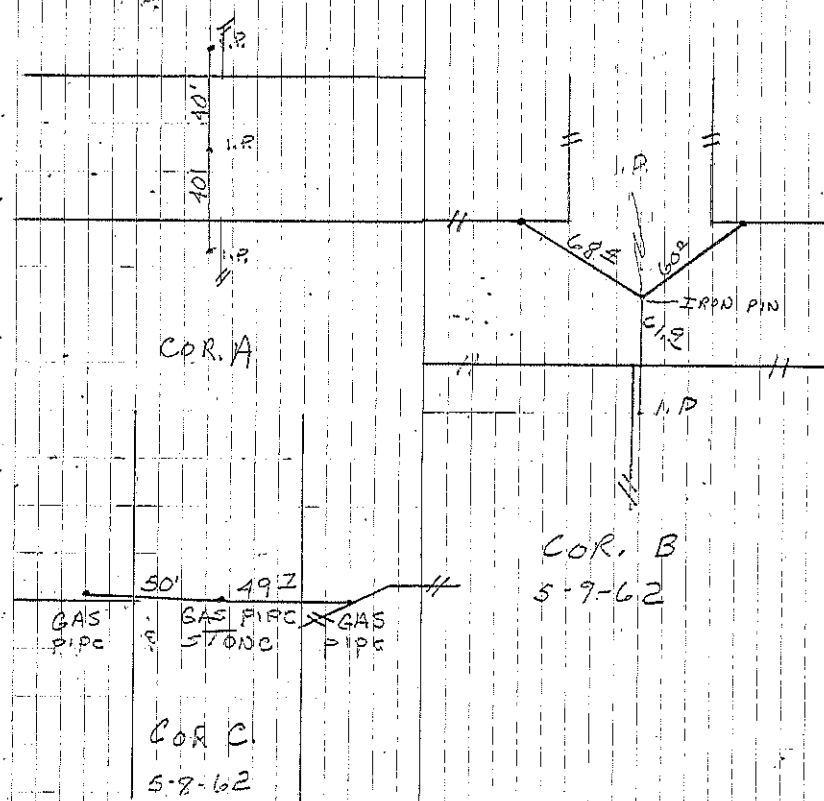
B Dug large hole, no CORNER FOUND.
Local residents SAID COR. LOST.
SET I.P. FROM EXISTING ROW. 5-9-62

C. Found stone 2' deep 55' AND
IN LINE WITH FENCE WEST.
SET GAS pipe so side 5-8-62
THANP.



CHANGED
IRON 25'
FROM
POST TO S'

N. Sec. 26



GAS PIPE
STONE
GAS PIPE

COR. C
5-8-62

COR. B
5-9-62

COR. A