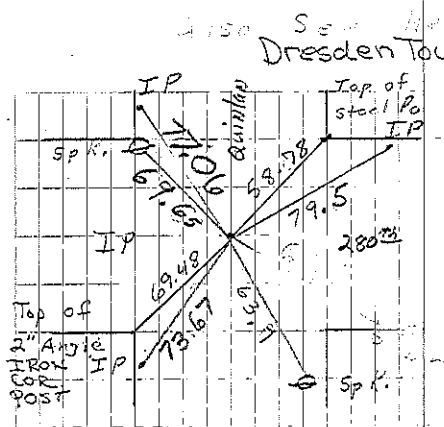
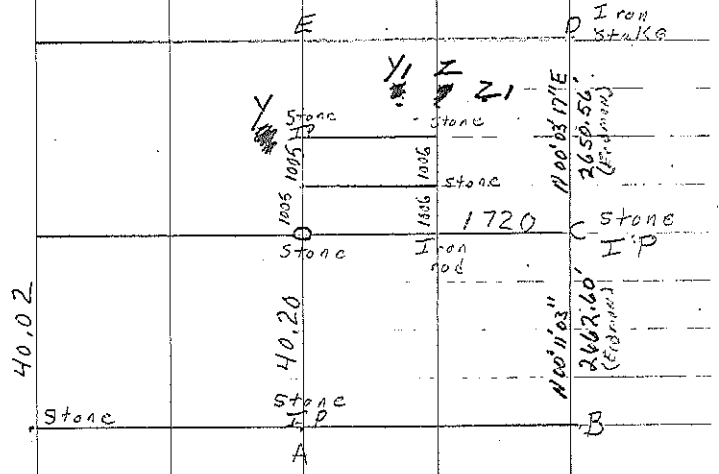


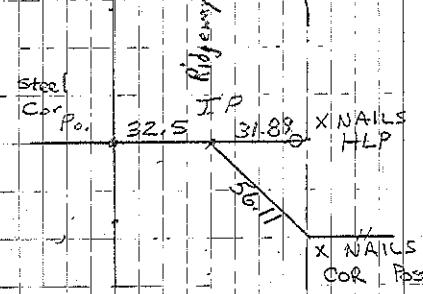
A	stone IP	Found 11	1957 1976 retired	
B	Limestone IP	Found	1954	File 162-282
C	Green rock IP	1927	Found	6-1964 File 162-282
D	stone IP	1927	Found	
E	stone I.P.	1927	Found	
O	Found IP	11-1-62	7-17-64	

NOTE: For Curve Ties See Next Page

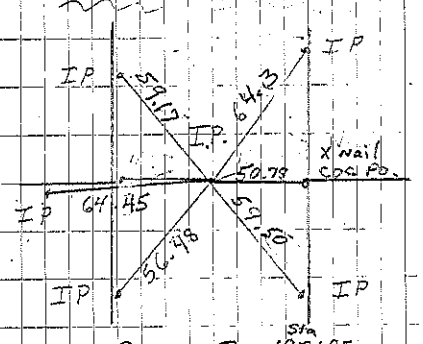
Y, Z } see page after Section 36 Dresden  
1988 Rise Program  
Street South of Beatrice



COR A 11-1-62  
CONSULTANT 6/29/96  
4-99 JF-JD

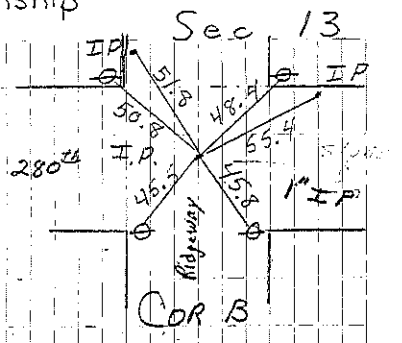


Cor. C  
CONSULTANT 9/92

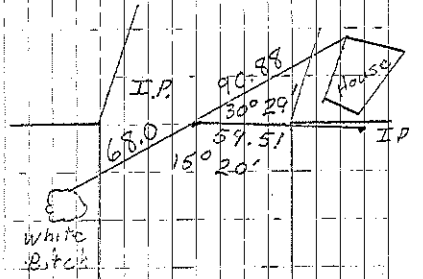


Cor O 11-1-62  
This P.L. is not  
for Road N&S  
CONSULTANT 9/92

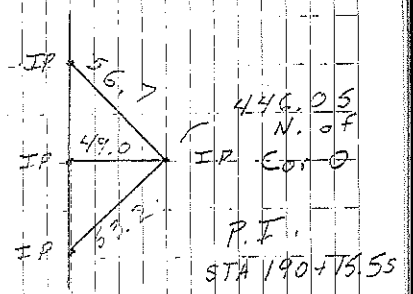
Dresden Township



COR B



Cor Y  
ref'd 4-1-52 with transit



For road N&S  
4-22-63  
5-26-76

C Found iron pin. 2/19

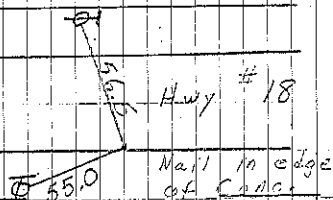
X Consult. set mag nail w/wacher 5-3-05. File 2005-0817

More corner ties after sec. 36

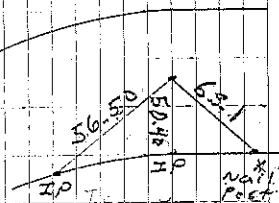
X  
mag nail

Dresden Township

C-2284 Sec 13

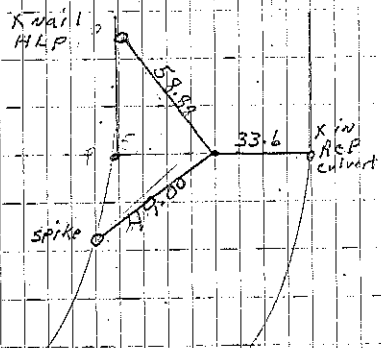


End of proj. STA 222+62.6



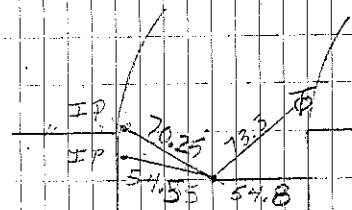
P.T. STA 193+61.7

4-99 JF+JD



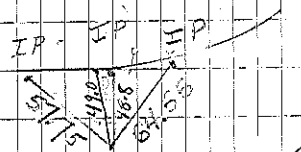
P.T. STA 205+88.9

4-99 JF+JD



P.C. STA 185+19.3

4-99 JF+JD



P.C. STA 197+54.1

4-99 JF+JD



X nails in corner post

Found iron pin

Cor. C 2/19

6-19-70

