

A Stone I.P. 1950
 Found 5-23-57
 Found Nail and Retied 10/12/95

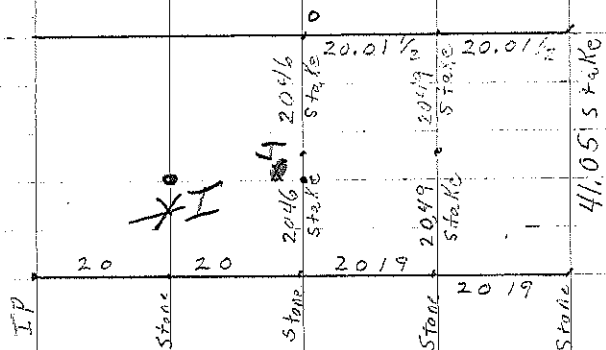
B Found Stone placed another on top
 Found stones placed I.P. over
 high point of lower stone 9-5-57

H₁ Found P.I. + retied 5-23-57

X I Consultant set 1/2" I.P. W No 11442
 10/6/95

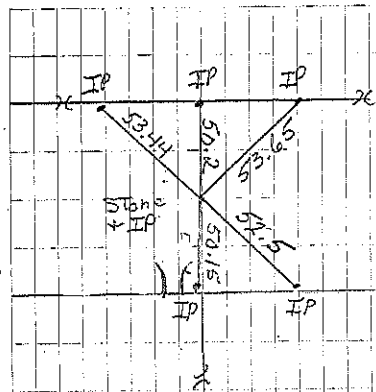
O set 1/2" bar at fence corner 1-4-96 BK 159 Pg 451

J set 1/2" bar at fence corner 1-4-96 BK 159 Pg 452

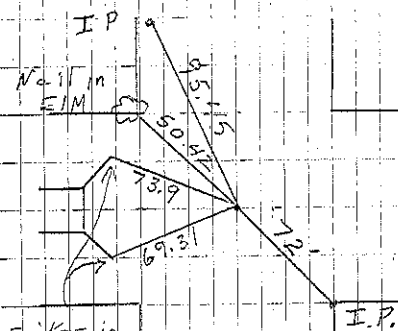


Dresden Township

Sec 15

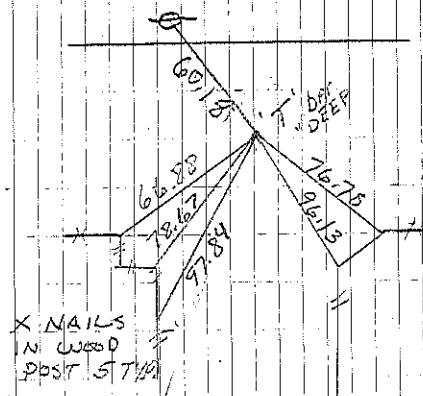


Cor. A



Cor. H₁

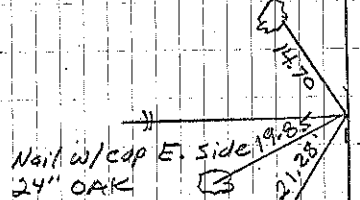
14 rods east of
 Sec 15. Also
 Cor H₁ P.I. for
 Road Sect A



Cor B 9-5-57

Consultant 2/8/95

Nail w cap S.W.
 Side 8" Elm



Nail w cap
 E. side 24" OAK

Consultant 10/6/95

Cor X I