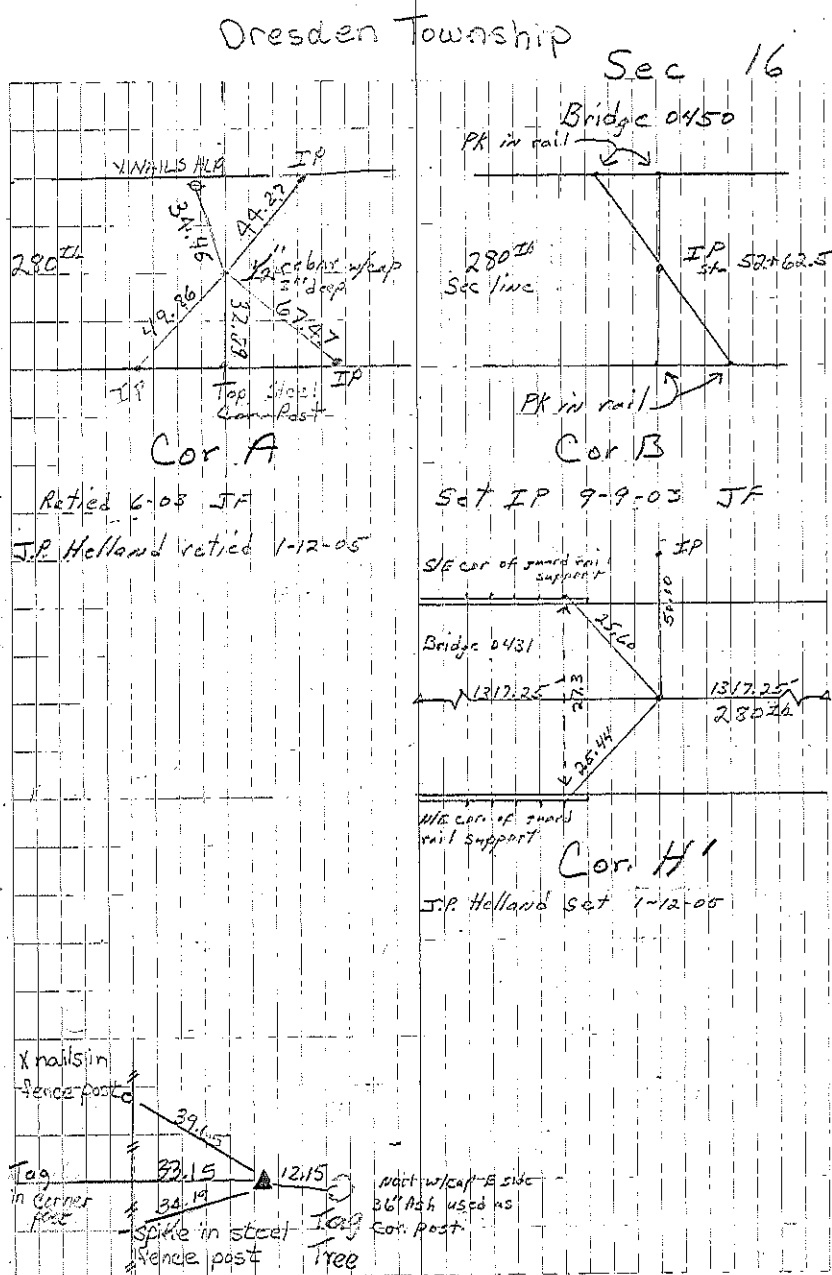


- 39.8 HLP
46.1 = 0
- A Iron Pin MAY. 1954. Found IP 3-29-88. Set 1/2" rebar w/cap 6-03. Consultant retied 1-12-05 File 2005-0079
- B May. 22, 1954 Iron Rod
Const point for road West
- O Consultant set rebar w/cap 1-12-05 File 2005-0079
- C Iron Pin 32' from E+W Posts
set standard monument 9" deep 2/79
- B Found original pin in toe of slope. 5-24-57.
Placed IP 1.16' east of E of west pier of bridge 0450 10-10-03
- H' Consult. set spike 1-12-05 File 2005-0080
- X Consult. set rebar 1-12-05 File 2005-0080
- Y Consult. set rebar 1-12-05 File 2005-0080

See Back of Book for Add.
ties

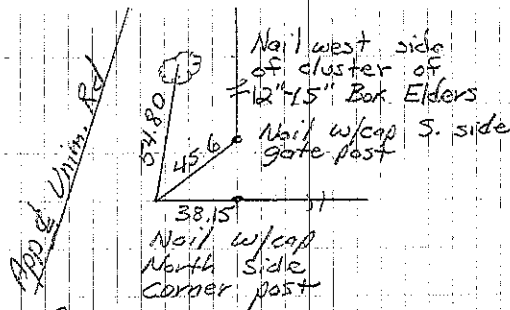
		2678.3 (2005)		
	(2005) 2638.0	O	(2005) 2642.8	C IPOT Mon
2654.70 (2005)	X 2636.30 (2005)	Y 2647.0 (2005)		B' IP
	(2005) 2634.5	A	2626.8'	B IP
	H'	IP		



Cor B₁ Corner established and tied in by Consultant 12/5/95, placed on line between the E_{1/4} corner and the SE corner, IP w/ #11442

Dresden Twp

Sec 16



Cor B₁

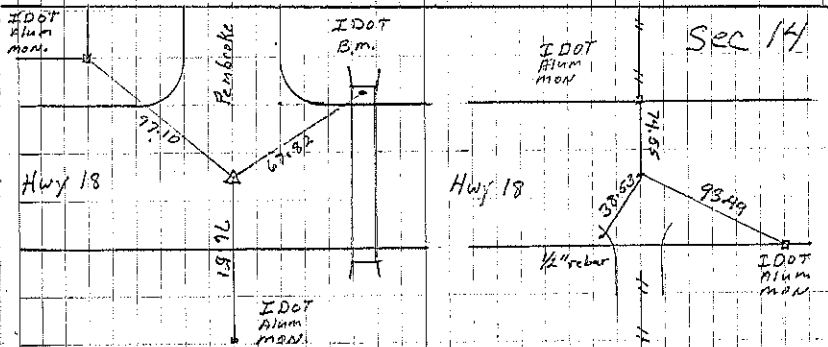
Consultant 12/5/95

Cor. F Set mag nail in mat 9-8-06 File 2006-1891

Cor. E Found hinge nail 3" deep 9-8-06. File 2006-1891

F
Nail

E
Nail



Cor. F

P. Herold set 9-8-06

Cor. E

P. Herold retied 9-8-06