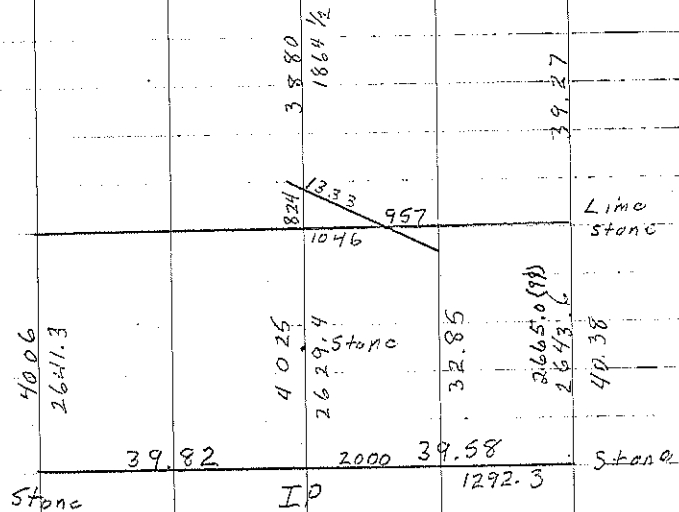


B Found reddish Stone 4-26-35
set Stake W. side rock 5-2-41

B Found granite stone 10" deep Set
bridge spike over. 2/79

C Consultant set 1/2" Rebar from road
distance from SW corner on E. Co. Rd. 7/2/94
* see Corner certificate 2-94-12 & 1-94-12 for distance
differences.

B₁ Consultant set 1/2" Rebar w/cap @ Midpoint
between SW corner and W. corner 7/2/94



Dresden Township
Sec 2

