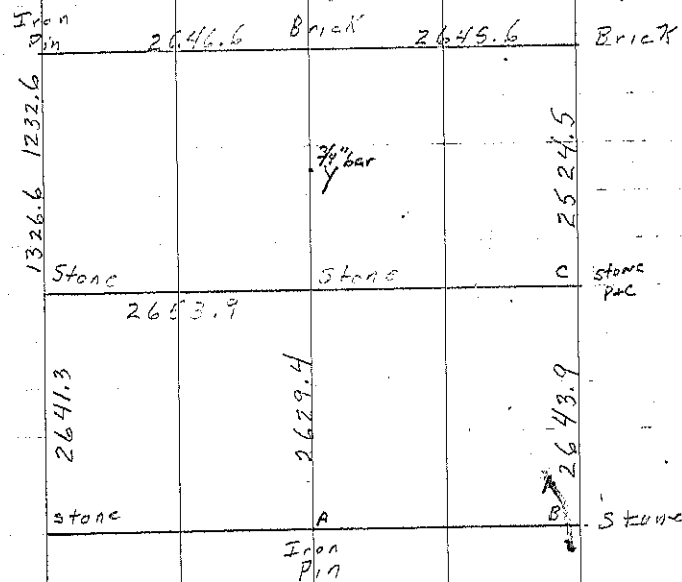
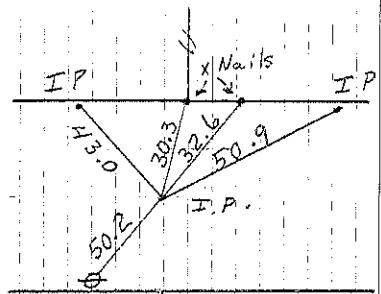


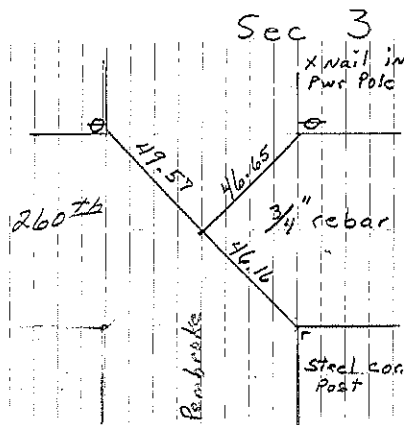
- A Iron Pin
Found I.P. raised + retied 9-21-67
- B Set Stone on line dist.
JR Crawford found 3/4" rebar 2" deep 5/11/99
- C Stone 1918. Set pin w/cap 7-21-03
File 2003-2313
- B Found iron pin. 2/79
- Y Set 3/4" steel bar w/alum cap 12-17-07. File 2007-2448



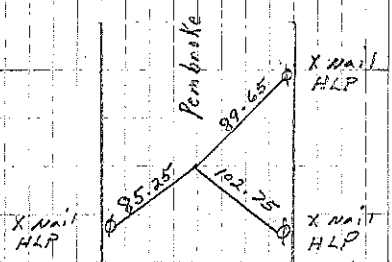
Dresden Township



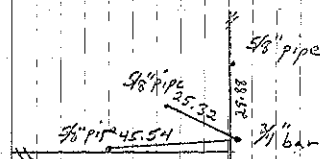
Cor A
9-21-67



Cor. B
JR Crawford Retied 5-11-99



Cor C
set 7-21-03



Cor Y
L. Erdman set 12-17-07