

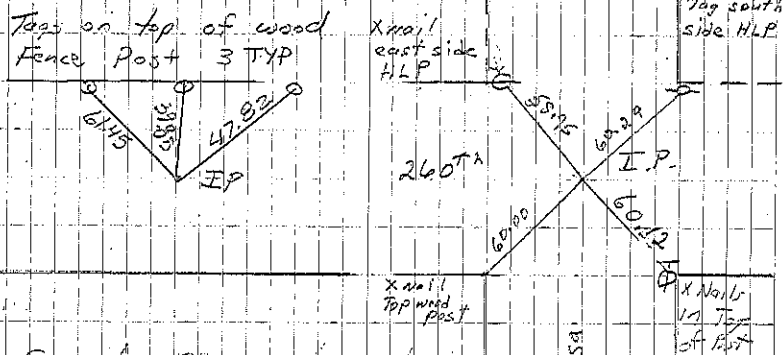
- A 2 x 2 Hub split fence May 47
Set IP 4-10-89
- B Iron Pin 3-21-30
Found IP raised. Endicott 4-10-89
File 2002-2749
- C Iron Pin 6-15-59
- X L Erdman set $\frac{3}{4}$ " bar w/cap 11-5-02 File 2002-2748

Note: Water pipe placed across road
April 19, 1955 0.75 mi. east of
NW cor sec 4-94-12

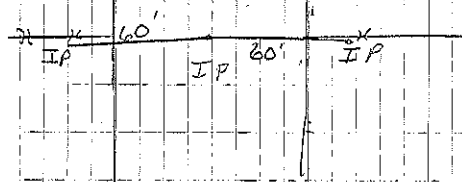
3 boulders	Stone & Brick Tile	Stone Brick	Stone & Brick
	20.12	20.22	
2007.5	Stone X $\frac{3}{4}$ " bar	2009	3871
			3891
Stone & stove legs	2 stones	IP	Stone & IP C
2010	Gas Pipe's 40.42	2010	20.22
1328	Stone 40.32	Stone	Stone
1328			
	2659.5	2659.5	
Stone	Stone A	Stone B	

Dresden Township

Sec 4



Cor A measured and dig large hole. Didn't find Hub or stone. Set IP Cor B
2659.5' Nat corner E + L Erdman reticled 11-5-02
33' 50" N Fence Const.
Only Consultant 9/24/97



Cor C
6-15-59
Consultant 9/19/97