

- A Set pin for Const. only split fence 11-1-56
- B Iron Pin with Gas Pipe over it Found IP 4-10-89
- C Found stone 33' from W. corner
- A<sub>1</sub> Set 1/2" bar w/ 1/2" alum cap 2-8-08. File 2008-0253

Stone 2605.6 Stone 2650.6  
 26' from S. Post  
 IP & Gas Pipe

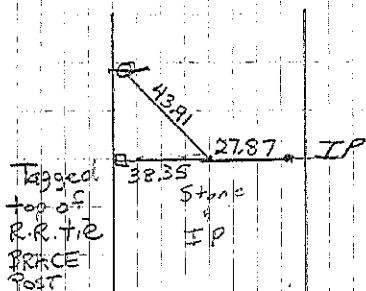
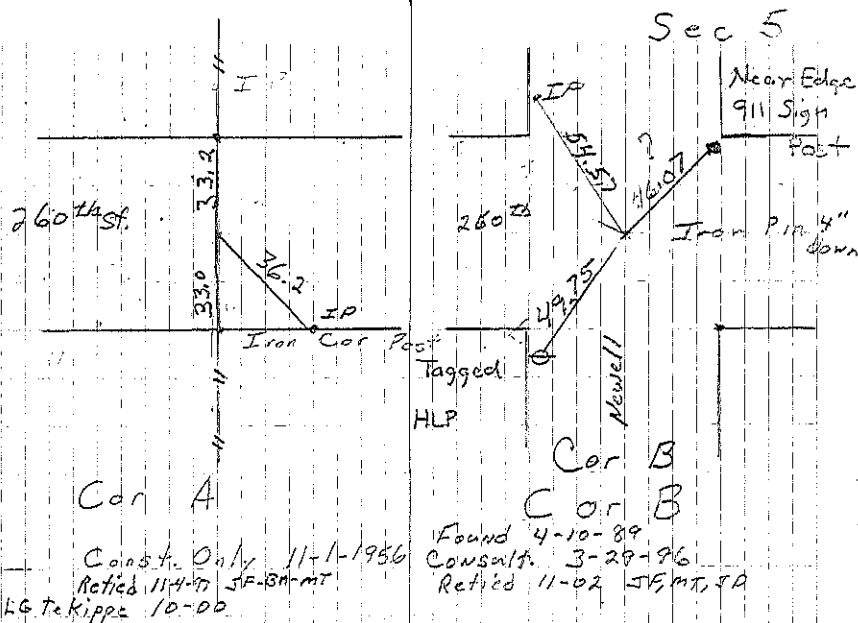
Br. Kiss dishes  
 3 boulders

23.78

I.P.  
 Stone

2655.8 Boulder  
 old bones  
 in Bottom

Dresden Township



Cor C  
 Consultant 3/29/96

