

A Iron Pin 1922 Plan F.A.P.# 177  
 Found nail 2-79. IDOT 7-8-85, Consult. 12-08-92

B Iron Pin 1922 Plan F.A.P.# 177

C Set iron pin 4-17-54

Q Set  $\frac{1}{2}$ " rebar w/cap 3-13-02. File 2002-0689

R Set  $\frac{1}{2}$ " rebar w/cap 3-13-02. File 2002-0689

C Found iron pin (2/79) Set  $\frac{1}{2}$ " rebar PLS 1552  
 File 2002-0690

B Found iron pin (2/79)  
 7-8-85 IDOT

A' Set nail w/washer 3-02 File 2002-0690

39.75

39.92

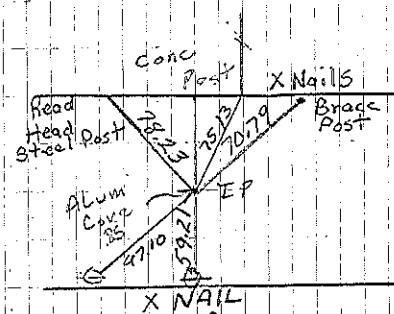
1552

Nail  
A

A'  
 $\frac{1}{2}$ " rebar

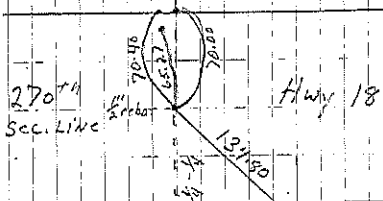
Dresden Township

Sec 7



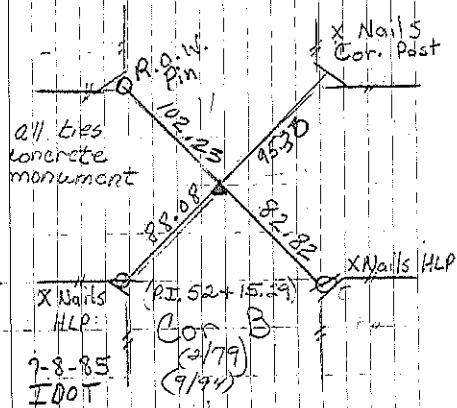
7-8-85 IDOT  
 CONSULTANT 12/03/92

Cor A

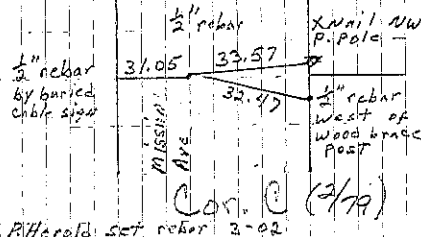


Cor A'

P. Herald set nail 3-02

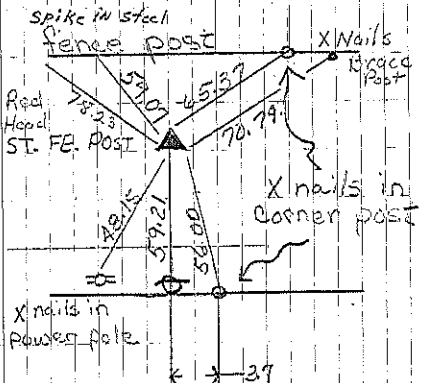


7-8-85  
 IDOT (2/79)  
 (9/94)



Cor. C (2/79)

P. Herald set rebar 3-02



Found nail

Cor. A (2/79)  
 + P.I. 25 + 47.14  
 7-8-85 IDOT