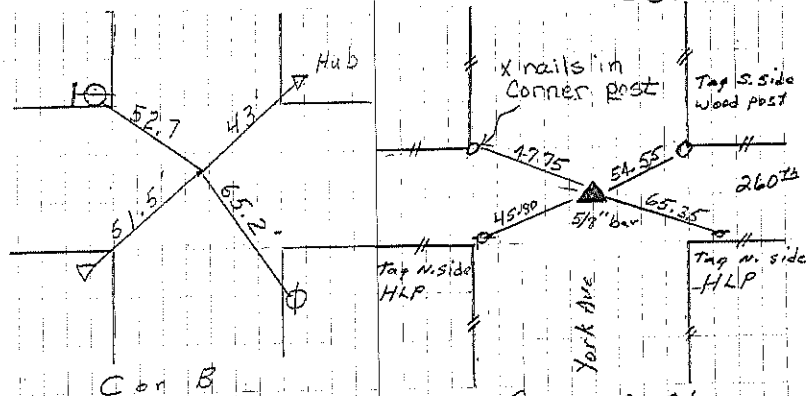


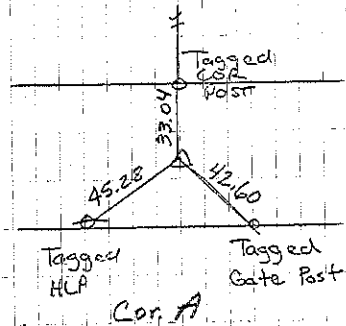
- B Iron pin with oak beside. Found IP 16" deep & set iron pin over. 2-79. Found $5/8$ " bar 2-20-07. File 2007-0372
- C Iron Pin 29' from old auto frame to East
- A Stone 33' to stake to N. Consultant set IP $1/2$ " Rebar w/cap.
- B Found iron pins 16" deep Set iron pin over. 12/79

	Stone	Stone	Stone
		1998	
	40.02		
			Stone
40.26	2007		
		1999	
			Iron Pin.
		40.17	
		1325.6	
stone 40.39	Stone 26.74		Iron Pin
Limestone			

Fredericksburg Township
Sec. 1



Cor B
Found I.P. & hub 10"
below surface 4-1-53 L. Erdman retried 2-20-07



Cor. A
Consultant set I.P.
and tied in 4/29/94