

Cor A Iron Pin 1953 Found stone set Iron Pin

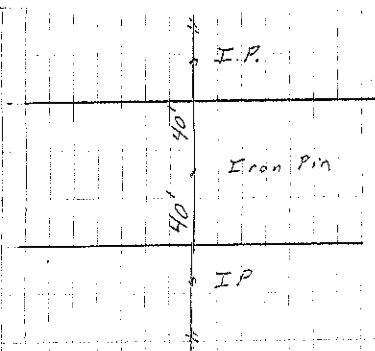
Cor B Iron Pin 1927 Found stone set Iron pin.

Cor C Split fences + dug 4x4x3 hole just into 2nd road bed found old 1x2" hub, set IP on North side of hub 6-10-75

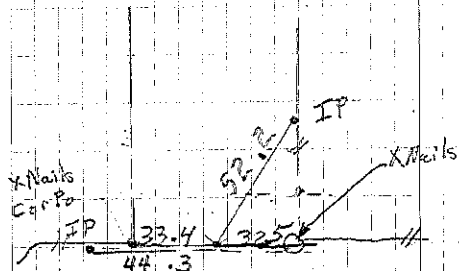
Iron Pin

Iron Pin
=
Hub

Fredericksburg Township
Sec 27

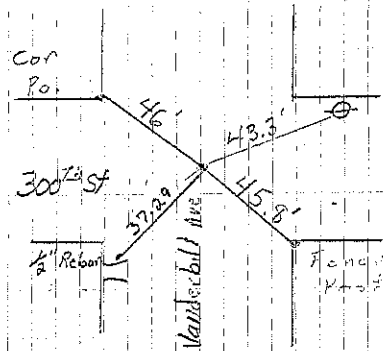


Cor A



Cor C

Found Hub
Set IP 6-10-75
Found IP + Retired 3-6-90 RA



Cor B
Lyle Takippe Retired 4-01

SECTION COR TIES

27	26
----	----

34	35
----	----

NW COR SEC 35-94-11

FOUND 1/2" SQUARE BAR 1.6' DEEP

34	35
----	----

W 1/4 CORNER SEC 35-94-11

LOCATED CORNER FROM REF. TIES

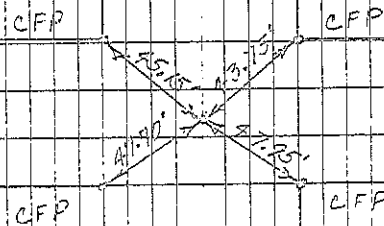
FREDERICKSBURG TOWNSHIP

CLARK COUNTY

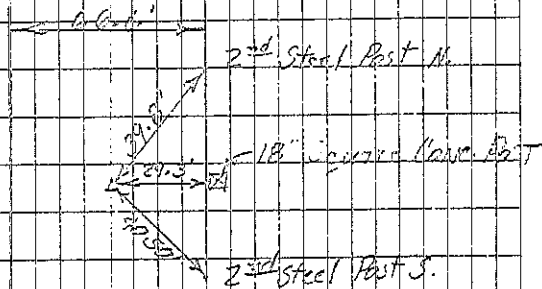
5/21/23

13

JFC
ETC.



Cor B
27-94-11



Cor C
34-94-11

Crawford Eng
Independence