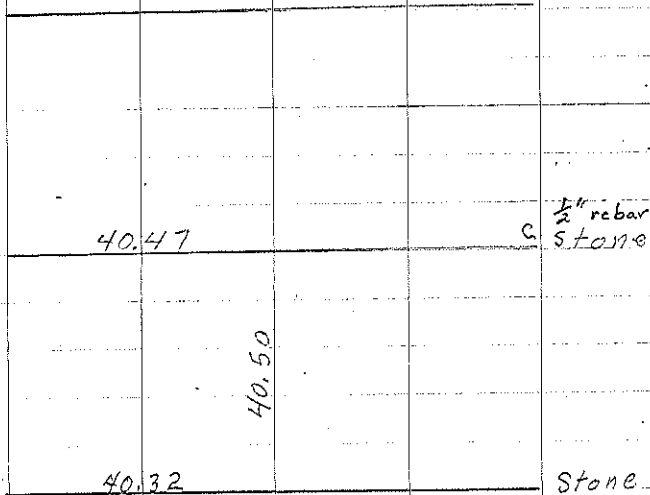


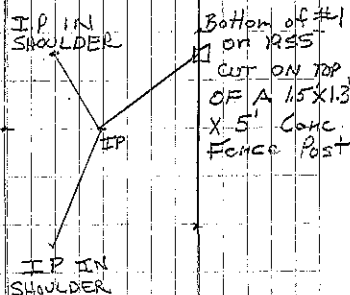
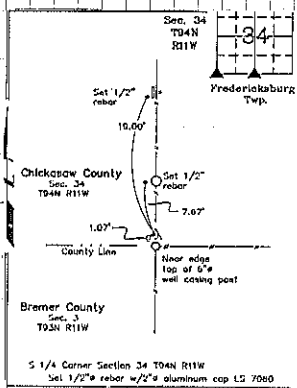
B Found stone 10-9-52

C Found Stone 29.3 from E. Post  
File 2002-0711



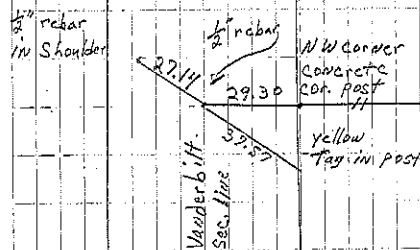
Fredericksburg Township

Sec 34



Cor. A  
Lyle G. Kippic tied 1-01

Cor B  
10-9-52  
Consultant 9/22/95



Cor C

Pierold set 1/2" rebar 3-02

SECTION COR TIES

27 26

34 35

NW COR SEC 35-94-11

FOUND 1/2" SQUARE BAR 1-6' DEEP

34 35

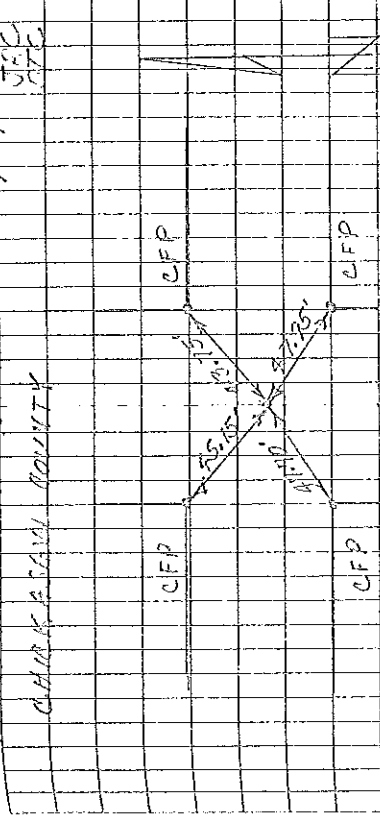
W 1/4 CORNER SEC 35-94-11

LOCATED CORNER FROM REF TIES

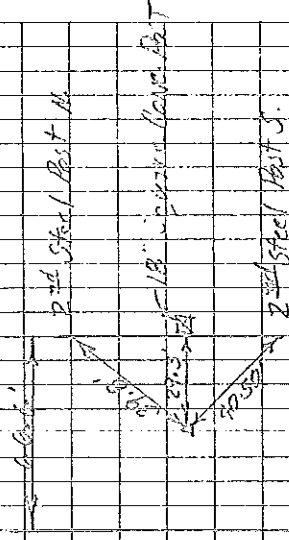
13

FREDERICKSBURG TOWNSHIP

5/21/73



Cor B  
27-94-11



Cor C  
34-94-11

Crawford Enger  
Independence