

Fredericksburg Township

Sec 9

A 1/2" Iron Pin 192 Z

B Found Plug in pavement 5-19-61

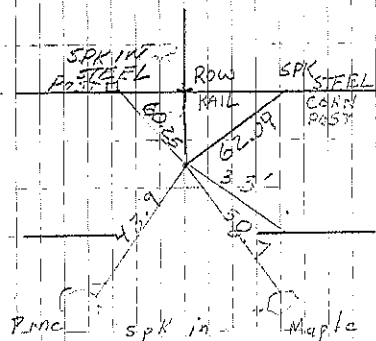
C Iron pin
Set Cement Nail in Mat 8-30-67

on yellow paper

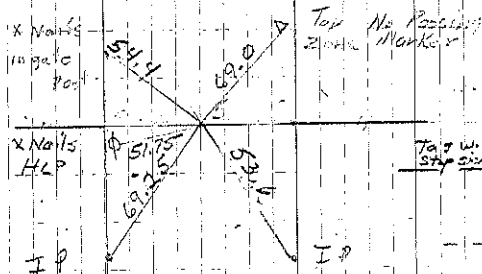
A Found lead plug 2/79
7-9-85 no ties under 100' IDOT

B Found lead plug. (E.P.I. 473+98.57) 2/79
7-9-85 Alum core Found core 7-2-96 BK 161 Pg 231

C Found rail in asphalt. 2/79

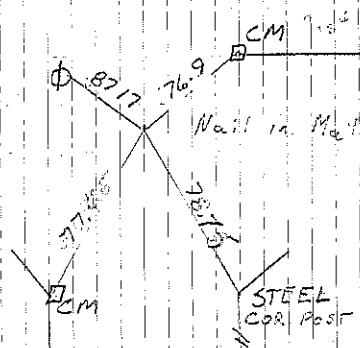


Car A
Retied 2/79



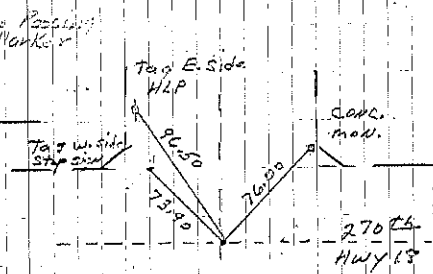
Car C
5-31-73 42
Retied 2/79

Found
Set PK 7-28-83
7-88
Retied 4-99 5F



Car B
2/79

Found 30' PK 4/12/79



Car B Alum Core
7-9-85
L. Edman retied 7-2-96