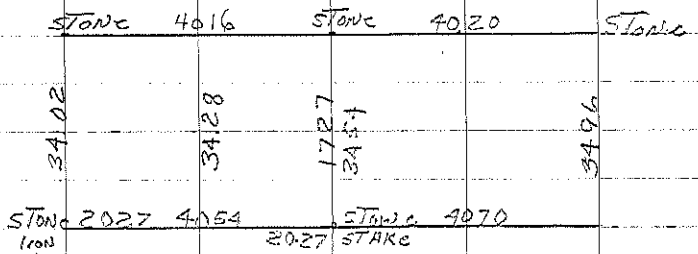


Jacksonville S

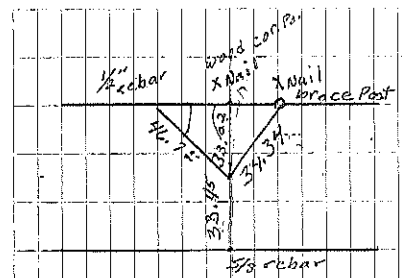
A. STONE  
 E.I.P. 7-29-29 Set STONE E.I.P.  
 Split Fence SET IP 9-23-98. Found 1/2" rebar 5-16-06  
 File 2006-1068

B. Limestone  
 E.I.P. 4-2-30 I.P. on W. side  
 Found 1/2" pipe 8-24-98. BK 168 p 415

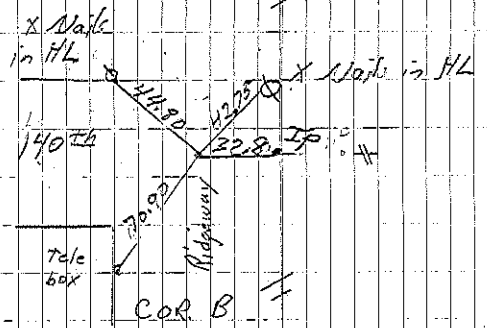
C. Stone 30.5 From W. Post  
 Found



Sec. 1



COR. A  
 Set Pin 9-98 J.F. mt, KC  
 M. Shimpak retired 5-16-06



Retired 4-11-60  
 Cleveland E. Hard  
 Found IP + Retired  
 4-6-90 RA

S. B. S. C. retired 8-24-98