

# Jacksonville S.

C. Set Pin on s. side of stone. Found bent rebar  
+ replaced with 1/2" rebar w/ cap 5-16-06. File 2006-1070

C1 Set I.P. 7-24-29.

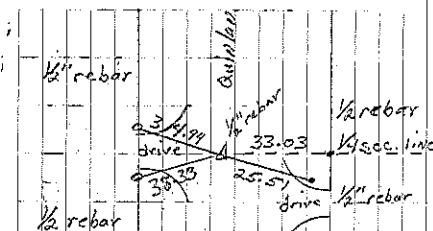
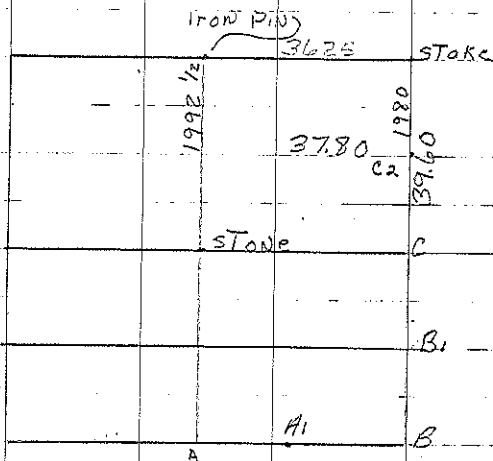
C2 Set 1/2 rebar w/ cap 5-16-06. File 2006-1069

A1 Set I.P. for const. only 5-26-56. Found & raised 11-1-62

B Found I.P. approx. 1' below grade 8-1-56. Found 11-1-62

A Set I.P. for const. only 8-1-56. Found I.P. 11-1-62

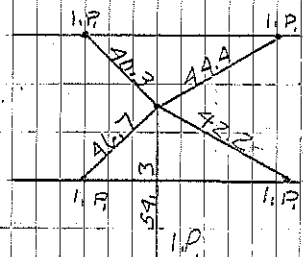
B1 Set spk. for const. only 1978. Found bent rebar  
& replaced with 1/2" rebar 5-16-06. File 2006-1070



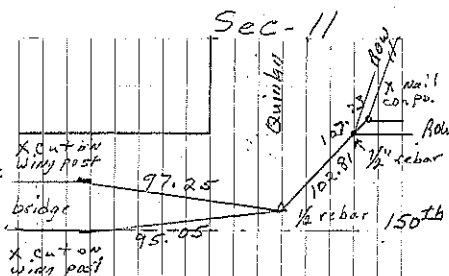
Cor. C  
M. Shimak retied 5-16-06



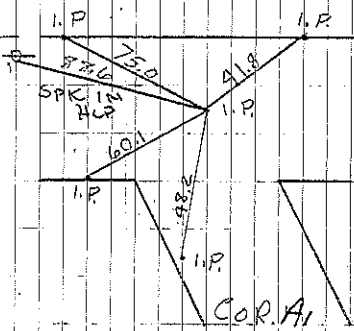
Cor. C2  
M. Shimak set 5-16-06



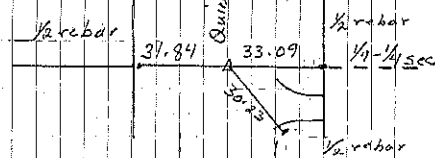
Cor. A  
Const. only 8-1-56  
Retied 11-1-62



Cor. B  
L. Takippe set 7-21-88  
M. Shimak retied 5-16-06



Cor. A1  
CONST. ONLY  
5-26-02  
Retied 11-1-62  
Retied 4-13-82 JFM



Cor. B1  
Set for Const. only  
4-14-82 JFM  
M. Shimak retied 5-16-06