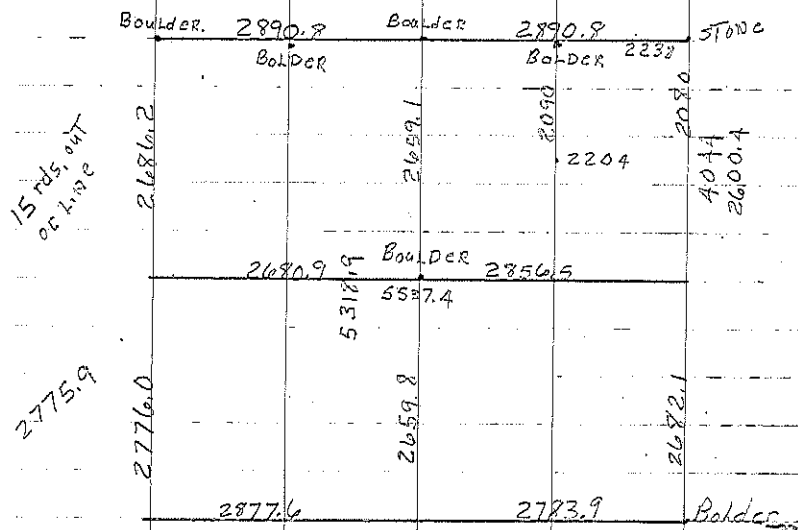


Jacksonville S

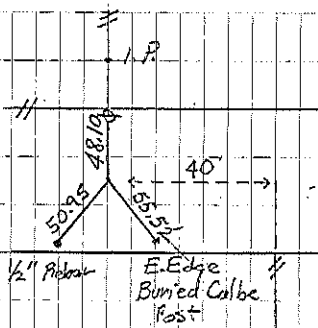
A unable to locate sandstone  
I.P. from 1927 survey set large  
boulder with I.P. to west side  
of Point on boulder (old with Gleason)

B Stone & I.P. 1927 corner could not  
be found set point sandstone  
rock & I.P. original cor.  
was destroyed in 1922 or  
thereabouts. Split fence  
lines to set corner

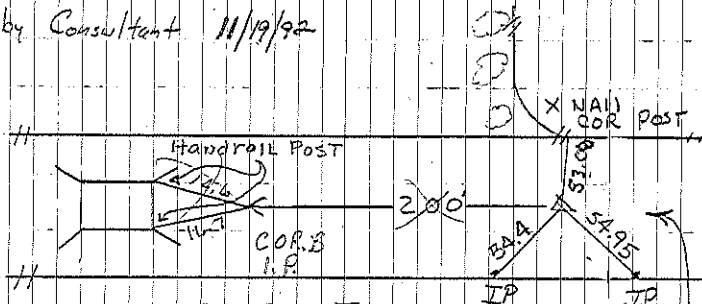
B. CONST. 1957 set pin for const.



Sec. 21.



COR A  
by Consultant 11/19/92



For CONST. ONLY  
COR B 7-13-57  
CONST. ONLY  
By Consultant 11/19/92