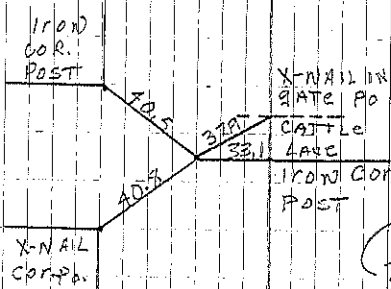
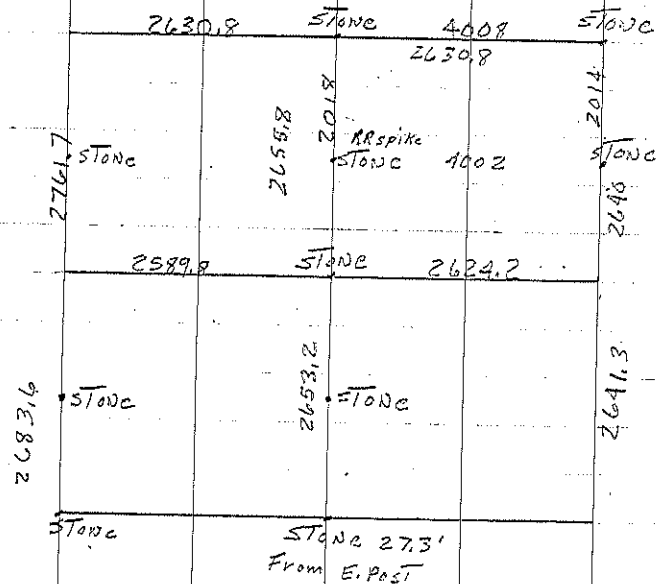


Jacksonville S

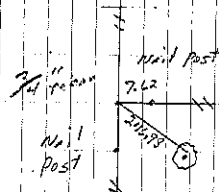
A Found stone (lime)  
Raised with pin (PARA A-4-63)

C<sub>1</sub> Consultant Found Limestone with  
point and set 1/2 R.B. with cap  
D.11 S.E. of Stone and tied in.

C L. Erdman set 3/4" steel bar w/cap west side  
of Cor. P. File 2004-0234



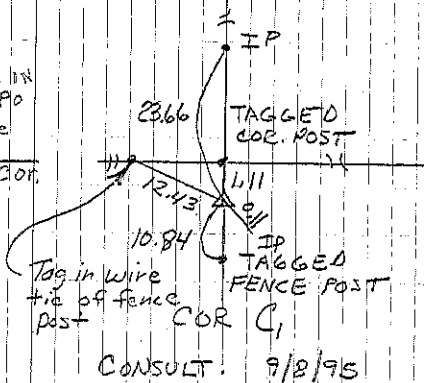
COR. A  
4-4-63



COR. C

L. Erdman set 4-8-09

Sec. 25



CONSULT: 9/8/95