

Jacksonville S

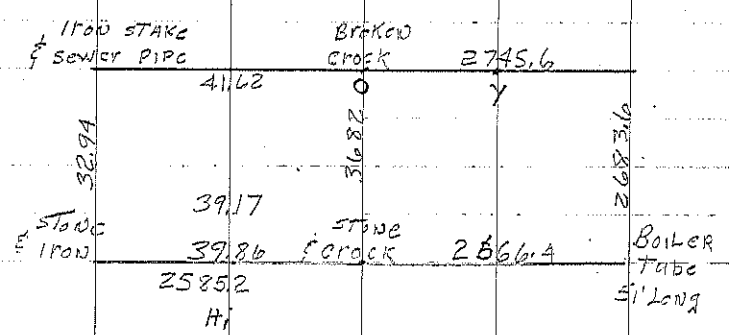
A ^{STONE} I.P. 7-25-30 Found STONE, Placed
I.P. ON WEST SIDE Consultant 10/17/95

B ^{STONE} I.P. 7-25-30 Found STONE, Placed
I.P. ON SOUTH SIDE Consultant 10/17/95

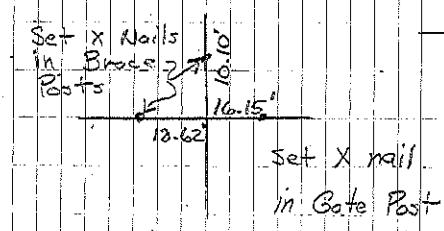
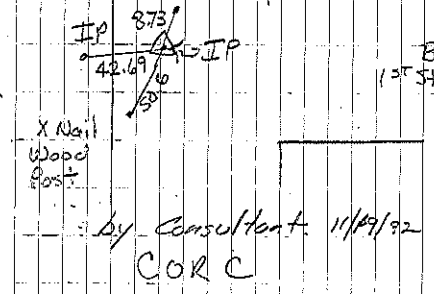
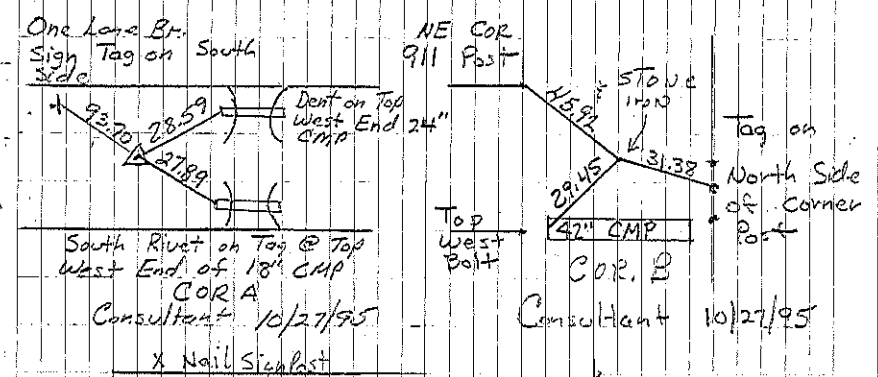
C Set STONE 1310' From 80' road
Cor. E 26.5' From COR. POST To
west. large FLAT STONE directly
North about 3'. By consultant 11/19/92

Y set 1/2" rebar midway between E 1/4 corner
and center of section 28.

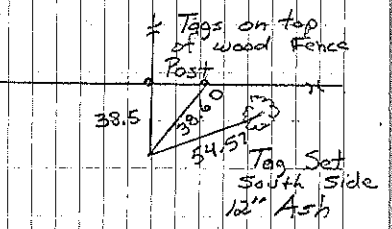
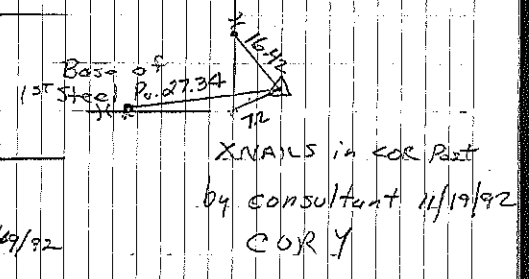
COR O set 1/2" rebar @ Existing 4 way Fence
Cor H₁ Consultant set 1/2" Reb w/cap 7060 on line
between SW corner and S 1/4 corner



Sec. 28



COR O



Cor H₁
Consultant set 1/2"
Rebar and tied in
2-3-97