

# Jacksonville S

B Stone 1920 F.A.P. # 35 A Land-mark.

C Plug 1929 F.A.P. # 35  
1920

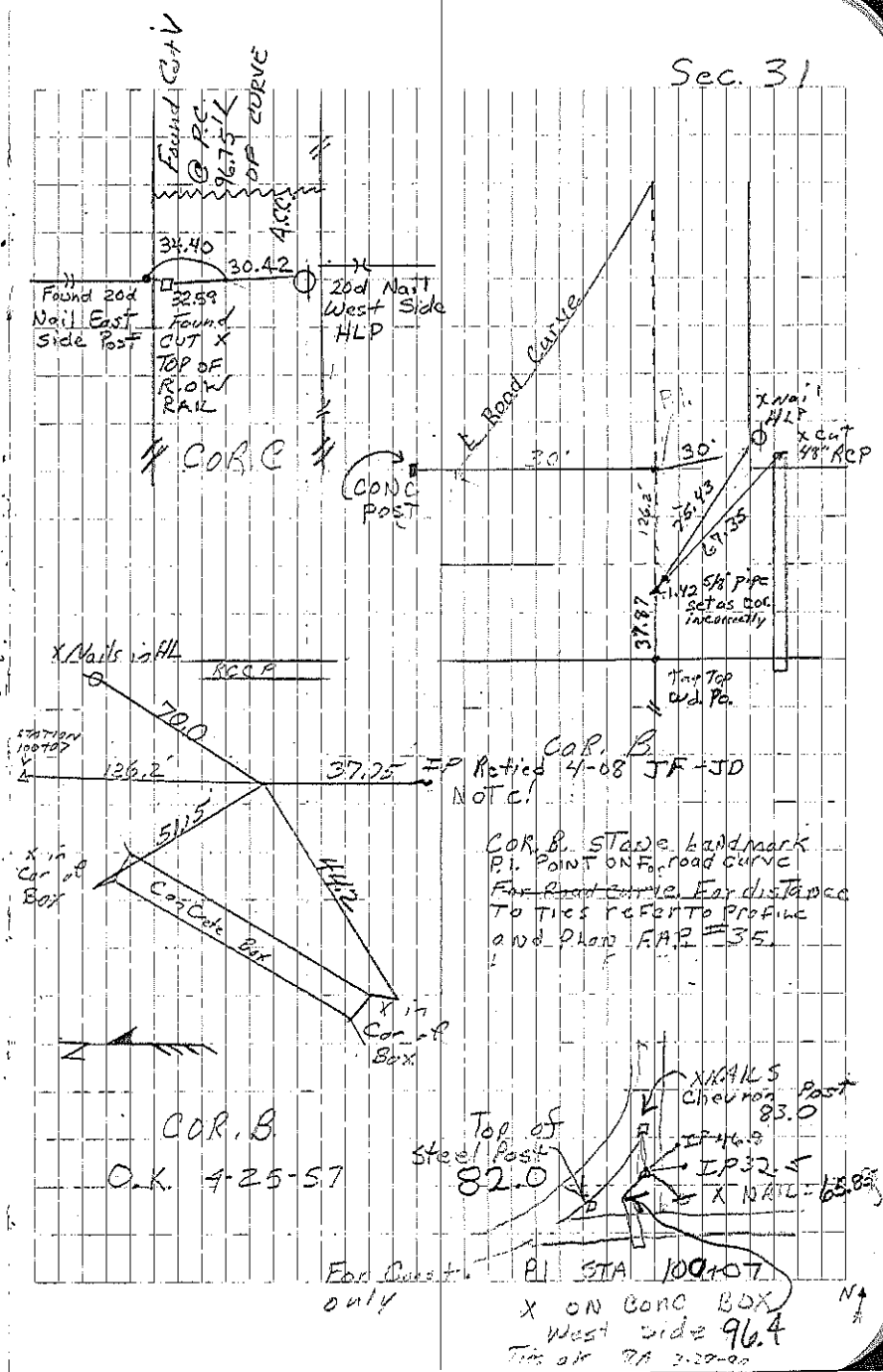
B Found Concrete Stone with IP Cast in it & retied. 3-28-70 RB  
For additional fix to cor. B see back of book

A Found Conc. Monument (Consultant) and tied in (see back of Book)

A<sub>1</sub> Consultant set 1/2" rebar 1/2 way between S<sup>1</sup>/<sub>4</sub> corner and SE corner (see back of this book)

	STAKE 39.12	STONE 41.32		41.32	
				41.32	
10.14	4094	41.16	41.26	43.12	41.96
	STONE 39.23	STONE 40.54		STONE	
	17.50	20.73	40.80		
1927, 1987		42 ch		43.37	
	STONE 37.22	STONE 4.20			
	17.10				
IRON STAKE					
	17.18				

## Sec. 31



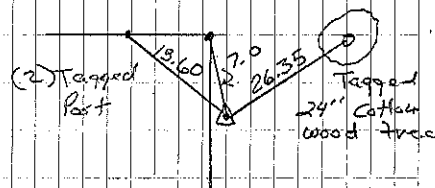
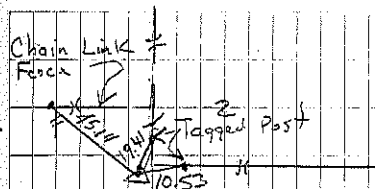
COR. B STAKE landmark P.I. POINT ON F.R. ROAD CURVE For Road Curve For distance to TIES REF TO PROFILE and Plan F.A.P. # 35

Top of steel post 82.0  
X MARKS Chevron Post 83.0  
IP 32.5  
X NAIL 65.85  
PI STA 100+07  
X ON CONC BOX West side 96.4  
Tie at PA 3-28-00  
For Const. only

Jacksonville S

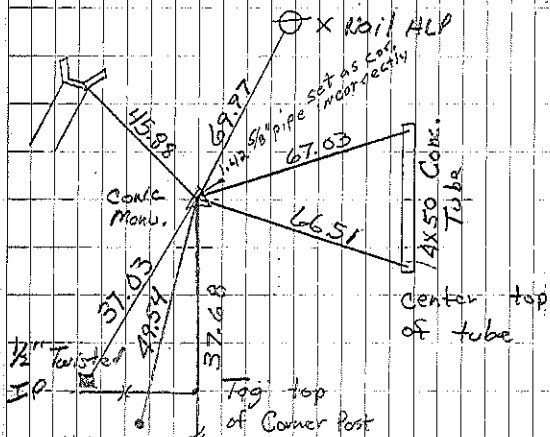
Sec 31

Cor B Fnd 4'x4" conc. man. 1-31-97. Bk 163-302

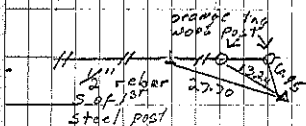


CORA

Consultant Found Conc. Man.  
and retied 11/3/93



1/2 IP  
COR B  
Found Conc. Man. and  
retied 1/3/97 (consultant)



Cor. A'

Retied by Paul Herold 9-01