

Jacksonville S

B I.P. 1925 set I.P. Found old
Stake. set PIN IN. EXACT LOCATION.
4-12-56 TANA

Set PK nail 4-26-96. BK. 160 Pg. 416

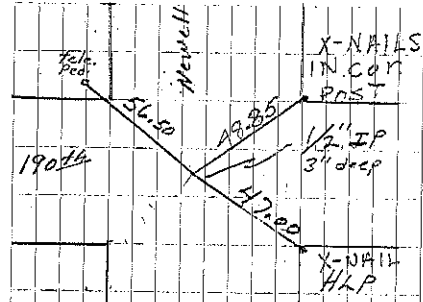
C I.P. 1929 set I.P. Found Pin
Retied 4-12-56 TANA.

A Stone
hub I.P. 7-22-30 Found Stone & hub
Place I.P. on west side.

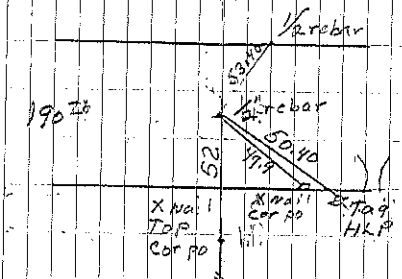
A Found I.P. on road Top bent over
Straightened it & drove it down.
about 0" below the surface.
27.8 To iron post to south.
1-26-56 Retied Sisson & Adams
Set 1/2" bar w/cap 5-24-96. BK 161 Pg 129

| | | | | |
|--------|-------|-------|-------|--------------|
| Stone | 41.61 | 27.16 | 39.22 | Stone & Iron |
| | 41.20 | | | |
| 1'3.15 | | 43.24 | 43.17 | 38.31 |
| Stone | 17.63 | 22.91 | Stone | Stone |
| | 40.56 | 21.90 | 40.42 | |
| | 46.42 | | 25.07 | |
| H3.37 | | 43.75 | 44.12 | 40.35 |
| | | | 40.22 | Stone |
| H3.37 | | | 40.24 | Stone |
| IP | 22.91 | Stone | 40.24 | Stone |
| | | IP | | Bolt |

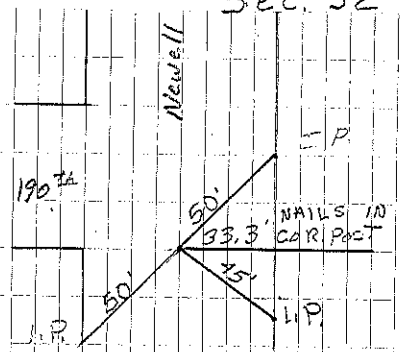
Sec. 32



COR B
Retied 4-12-56
L. Erdman set 4-26-96
Retied 10-02 JF-JD



COR A 4-26-57
L. Erdman set 5-21-96
Retied 10-02 JF-JD-MT
JF-JD retied 4-1-08



COR C
Retied 4-12-56
TANA