

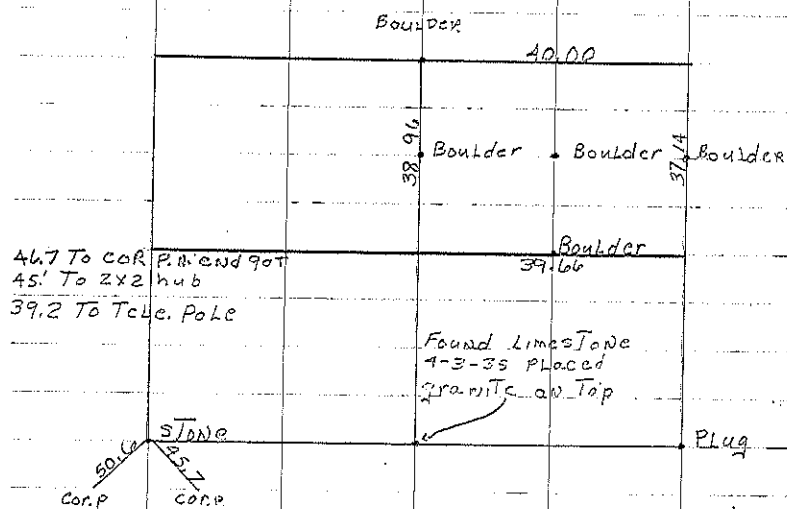
Jacksonville S

B 1886 Co Survey book # 1 page 2

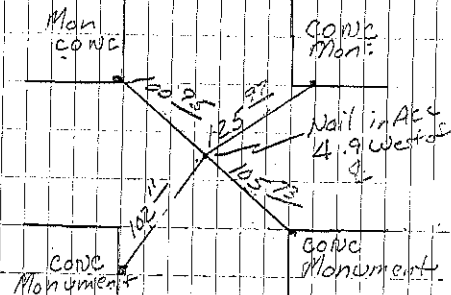
B Plug Stone IP 1921 E.A.P. # 76 Sec C
11/90/const.

C Plug Stone IP 1921 E.A.P. # 76 Sec C
CONSULT. 11/90

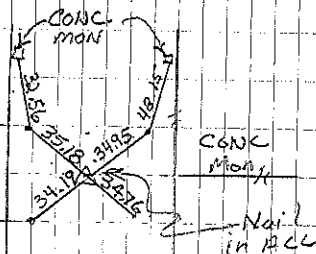
A Found granite - SET PIN &
Retied 4-20-58, 6-29-62



Sec. 7

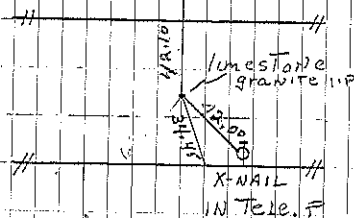


COR. B
11/90. By Const.



4TYP 5/8" IP WITH
IDOT CAPS APPROX 12"
deep 2' off shoulders

COR. C
Consultant 5/8/97



COR. A 4-20-58
Retied 6-29-60
Retied 10-17-06 FF-MT