

Jacksonville S

B. Limestone Retired brick 4-13-51

C. Limestone 1925 Limestone prole

1/2" w/ cap

Remarks same as B

Cor O Found 1/2" rebar 1/2" rebar 4-21-06. File 2006-0865

A Set PIN 33' from fence going south
7-8-60. Retired 3-29-63. Set 1/2" rebar
w/cap 4-21-06. File 2006-0865

E Found 1/2" rebar w/cap 4-21-06. File 2006-0865

Cor C Consultant set 1/2 A.B. midpoint between
corner 1/94

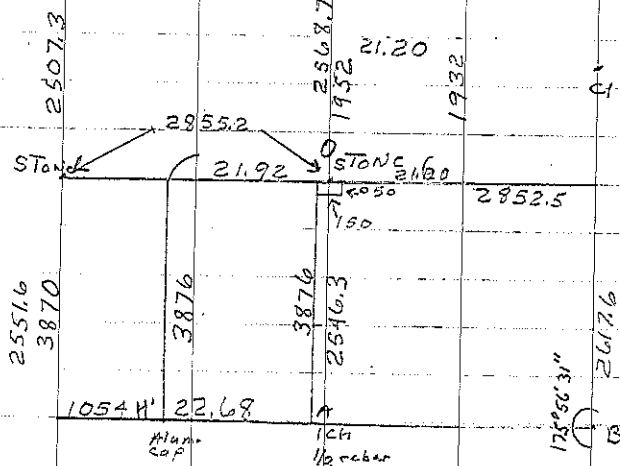
P Found 1/2" rebar w/cap 4-21-06. File 2006-0865

2739.0

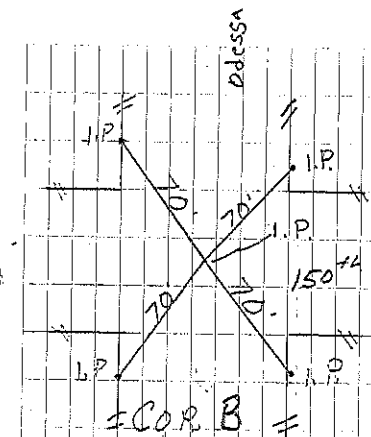
Boulder

2740.9

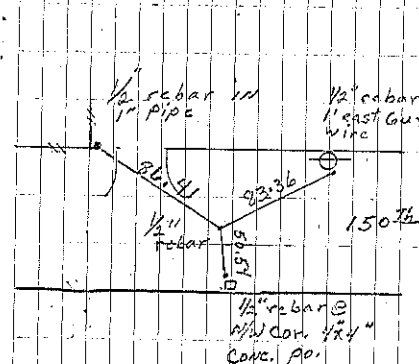
(See End of BK for H₁)



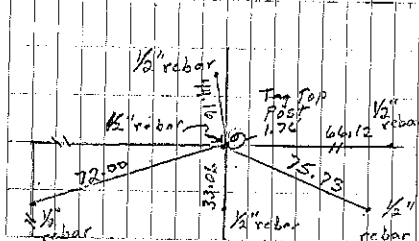
Sec. 9



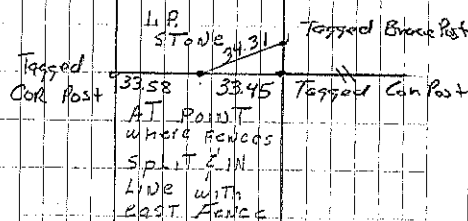
T. Van Lammington retired 7-2-01
See BK 2001 Apr 13791



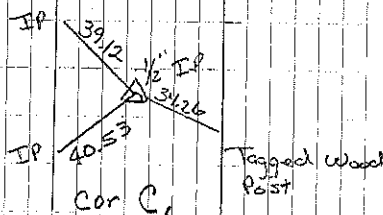
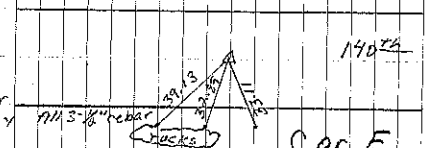
M. Shimak set 4-21-06



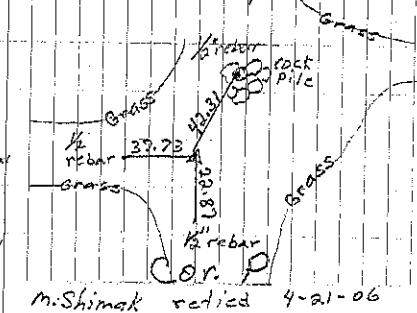
M. Shimak retired 4-21-06



1/94 Consultant Found I.P. & Retired



Consultant 1/94

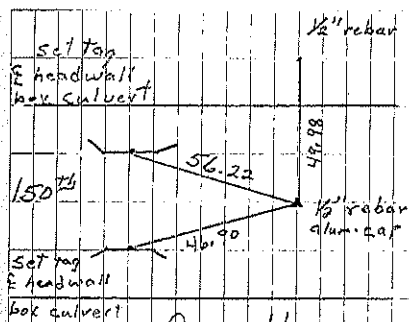


M. Shimak retired 4-21-06

Jacksonville S

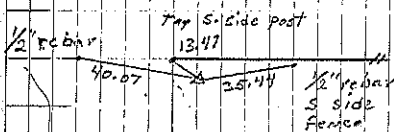
Cor H₁ Found 3/4" iron pin 18" deep, Raised with 1/2" rebar w/ 3" alum cap 4-21-06. File 2004-0866

Cor J Set 1/2" rebar w/cap 7-19-07 File 2007-1486



Cor. H₁

M. Shimak raised 4-21-06



Cor J

G. Casady Set 7-19-07

Sec 9

Sec 2