

# Jacksonville N

B. Plug & hub 1922 2" OAK hub

Found hinge mail 9-1-99. BK 173 pg 50

C. Plug & hub 1922 TAKEN FROM PRO.

EXPLAN. OF F.A.P. 131

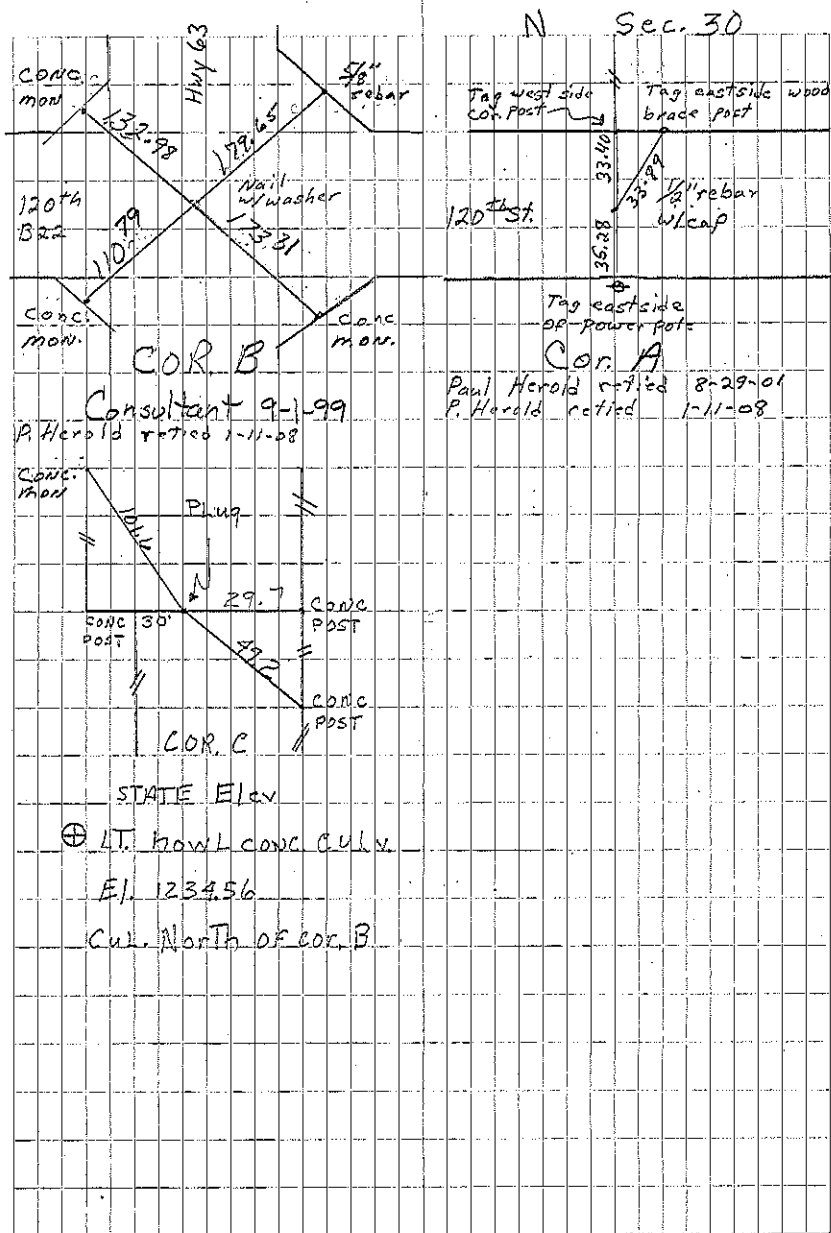
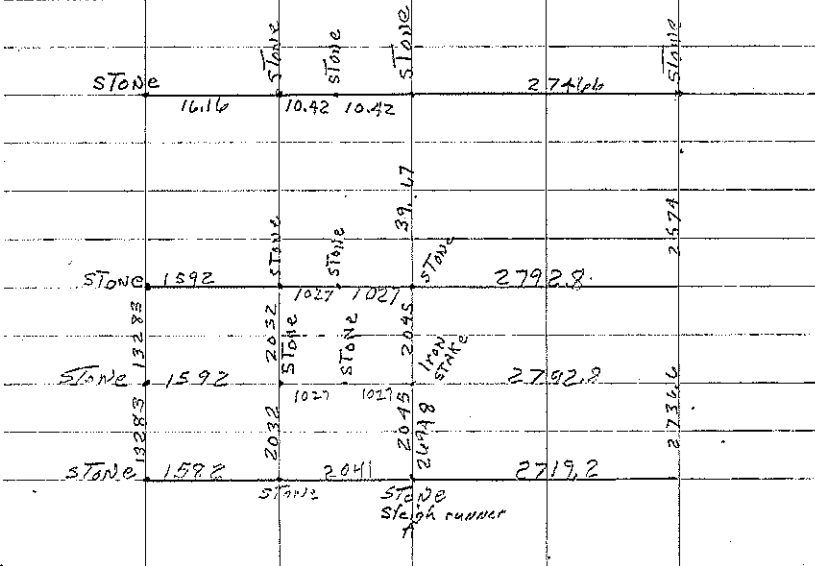
A. Set old sleigh RANWAY = BRISK

Found 1/2" rebar w/ alum cap over sleigh runner. File 2008-0083

B. Found nail in pavement 2-21-74 WKK

PT. for US 63 is 0.1' Rt. of Sec Cor.

Found nail w/washer 1-11-08. File 2008-0083



# N Sec. 30

Tag west side cor. post

Tag east side wood brace post

Tag east side 90-power post

COR. A Paul Herold retired 8-29-01 P. Herold retired 1-11-08

COR. B

Consultant 9-1-99 P. Herold retired 1-11-08

COR. C

STATE Elev

LT. HOWL CONC. CULV.

El. 1234.56

CULV. North of COR. B