

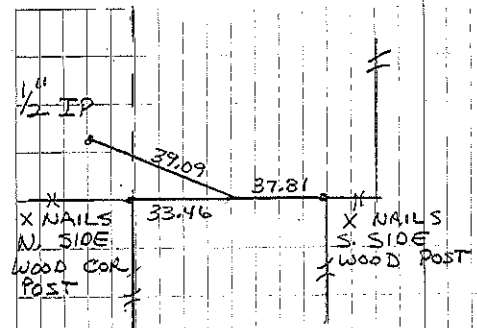
New Hampton

- A 8x8x1/2 Blue Granite with crockery 5-7-17
Consultant Found IP 10/4/96
- B Bluestone 6-8-26 Consultant set 1/2" rebar w/cap
File 2002-3106
- C Gas Pipe 6-15-28
- O Oak Hub IP found 7-88 JEM
- A, & K See last page for details
- X Consultant set 1/2" Rebar Equidistant and
on line between the W/4 and center of section
10/4/96
- H₁ Found IP 1/2" as shown on survey plat
Deed Book 140 Page 138-140 + Deed Book 141
Page 433 in Chick. Co. Recorder's office
10/4/96 5379.6

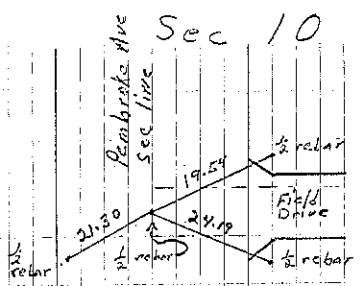
2687.3 IP 2689.8

5303

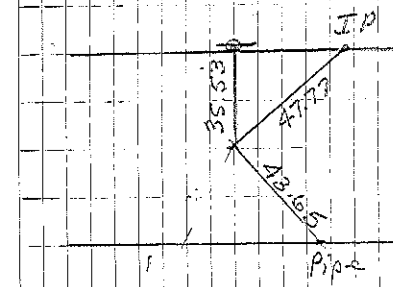
	X	IP	Gas Pipe
			1358.3
			1335.5
		Stone	2674
	H ₁		stone



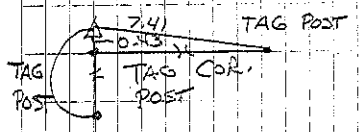
Cor A
Consultant 10/4/96



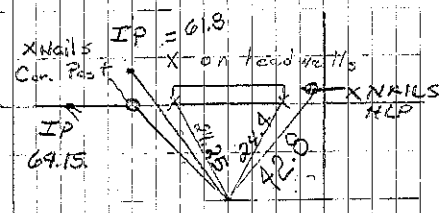
Cor B
P. Herold set 12-19-02



Cor C
Retired by Consul
9/15/93

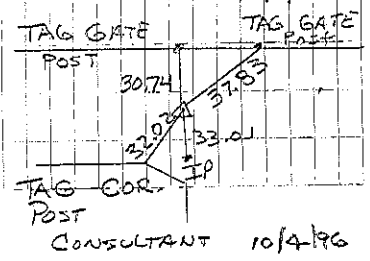


Cor D
CONSULTANT
10/4/96



Cor D.
4-11-63

7-88 Found IP and retired
Consultant Retired 10/4/96



CONSULTANT 10/4/96