

New Hampton

A' Iran Pin 5-2-52. Found 4-20-64. Found
3/4" rebar w/cap 2-18-04 File 2004-0380

B Found Large pointed Rock set I.P. 5-11-62

C Found 1/2" rebar w/cap 2-18-04. File 2004-0375
File

Q' Iran Pin 1926 Set 1/2" rebar w/cap 2-18-04. 2004-0377

J L. Erdman set 3/4" rebar w/cap 2-18-04 File 2004-0378

K Set 1/2" rebar w/cap 2-18-04. File 2004-0379

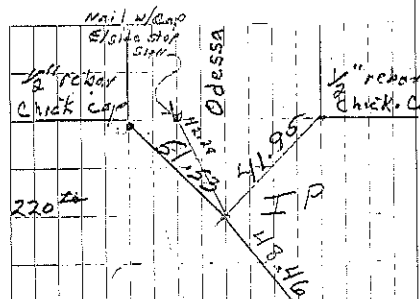
A Set 1/2" rebar w/cap 2-18-04 File 2004-0376

O Consultant Set 1/2" Rebar w/cap 1994 from record
Survey made 9/29/1910, recorded in Survey Plots
& Field Notes BK #1 Pg. 204 of Site in Chick Co. Eng.

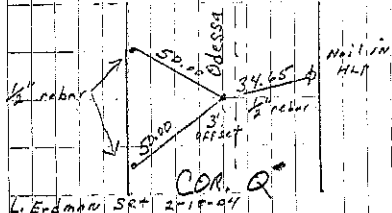
21.28	Stone 20.11 ch.		
22.08 ch	Stone		
44.30 ch	Stone	1/2" rebar I.P.	Q'
			Stone 1/2" rebar

J J K

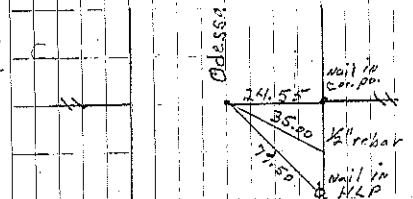
A 1/2" rebar A' 3/4" I.P. B IP



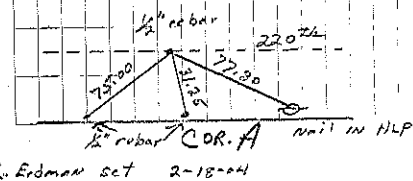
COR. A'
Retied 5-21-03 JFA MK
L. Erdman found 2-18-04



COR. Q'
L. Erdman set 2-18-04

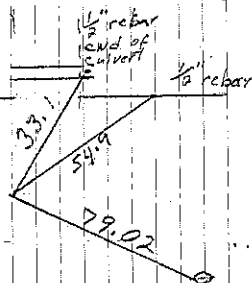


COR. X
L. Erdman set 2-18-04

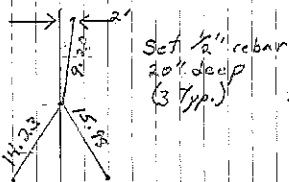


L. Erdman set 2-18-04

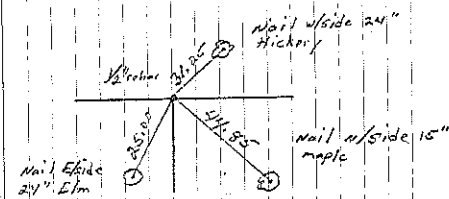
Sec 16



COR. B
Consultant 10-91
7-26-96
Retied 4-02 JF-MT-JD



COR. O
Consultant 5-2-94



COR. C
L. Erdman found 2-18-04