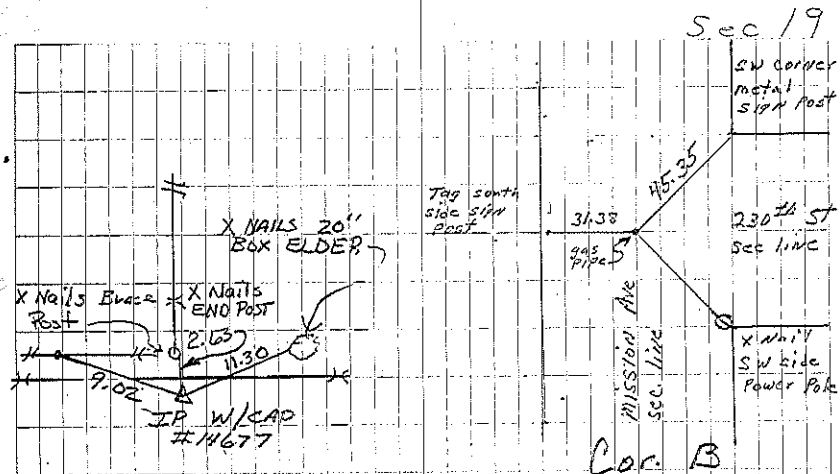


B Stone
 TP 6-1-28

Consultant found gas pipe 12-20-02 File 2002-3133

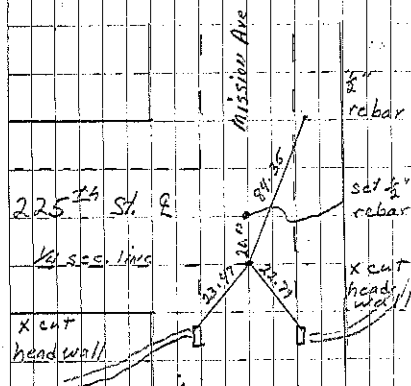
Cor X S Steinfeldt found pipe 6-8-99

Cor. C Consultant set center line pin of 225th St
 and Mission Ave. 20' north of East 1/4 sec line
 File 2002-3134



Cor X
 Consultant 6/8/99

L Tekippe retired 12-20-02



Cor. C
 L Tekippe set 12-20-02

Stone	39.01	38.63 ch	Stone
18.12	202 1/2	stone 33' from E. corner to S.	1/2
40.15 ch	40.35 ch	202 1/2	202 1/2
18.13 ch	19.16 1/2 ch	19.16 1/2 ch.	Stone
Stone	X	Stone	Stone