

New Hampton

A · Set stone 29' from N. cor Post

· 2701.4' N. of Center Sec 28

Consultant set 1/2" rebar w/cap 6-30-05. File 2005-1330

A' I.P. Retied 3-29-68

C. Stone & I.P. 1927 Found 2 corners drove I.P.

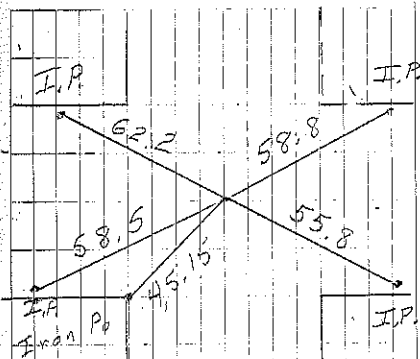
Consultant set 1/2" rebar w/cap. 6-30-05. File 2005-1330

O' Stone & I.P. 1927 Found 4-3-68

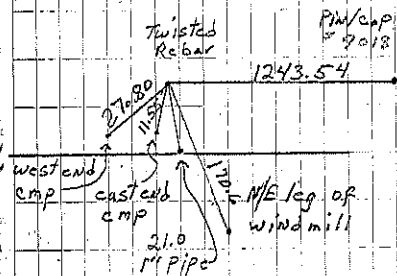
F E D

G O C

H A' 1/2" rebar A₁ B



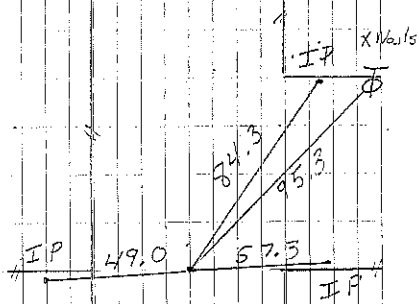
Cor A'



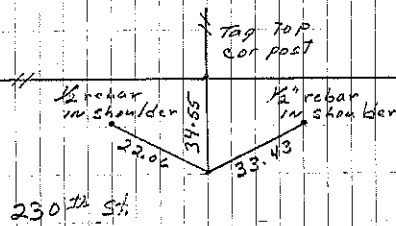
Cor C East Stone

Retied 12-99 Consultant
See cor. certificate

Sec 21

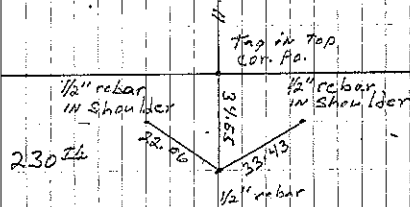


Cor O'



Cor C

m. Shimak set 6-30-05



m. Shimak set 6-30-05